

Make Your Mark

The UK's largest youth
consultation



Youth Parliament
MAKING OUR MARK

Children & Young People Now
Awards 2016

Finalist

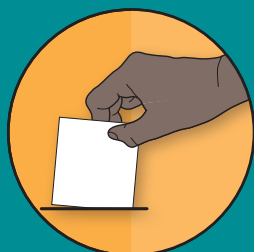
2015
charitytimes Awards
Recognising leadership and professionalism
Highly Commended

2016 RESULTS

978,216 votes

1 in 6

11-18 year olds
vote



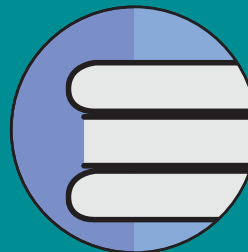
Over 550

young
volunteers
recruited to
help consult
their peers



1,204

schools,
colleges
and youth
organisations
supported the
campaign and
vote



ISSUES

**A curriculum to prepare
us for life - 142,471**

**Tackling racism and
religious discrimination -
123,944**

Transport - 120,186

Votes at 16 - 112,687

**Stop cuts that affect the
NHS - 109,919**

Mental health - 105,140

First Aid Education for All
Young People - 101,009

Raising Awareness of Sexual
Harassment in schools -
61,930

Body Image - 60,824

Fund our youth services,
don't cut them - 40,106

TOP 5s

Highest % turnout

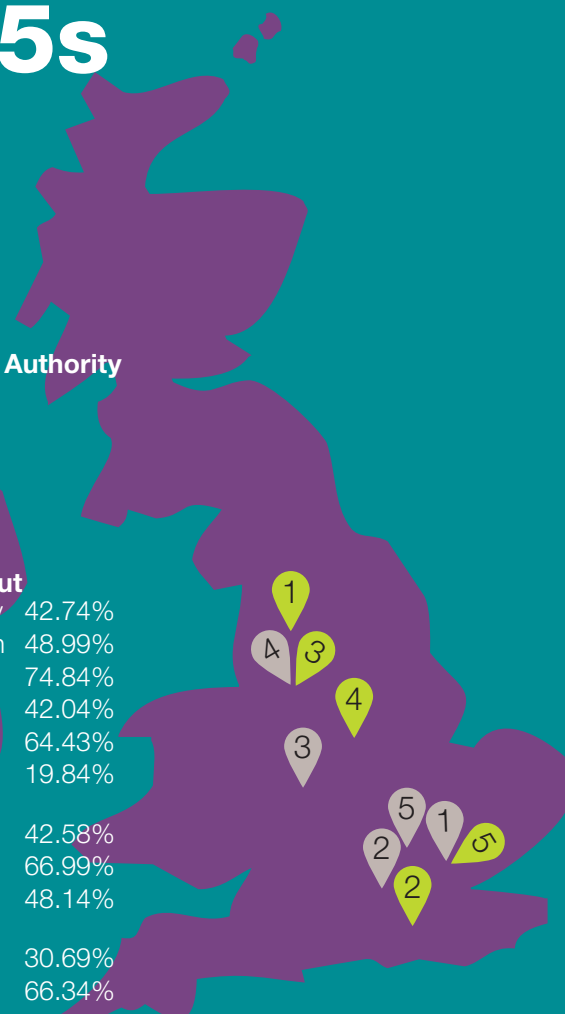
1. Redbridge 74.84%
2. Slough 66.99%
3. Walsall 66.34%
4. Manchester 64.43%
5. Harrow 64.38%

Top number of Votes/Local Authority

1. Lancashire 30,310
2. Surrey 27,004
3. Manchester 25,406
4. Derbyshire 22,948
5. Redbridge 20,816

Region/Nation Top % Turnout

East Midlands	Leicester City	42.74%
East of England	Peterborough	48.99%
London	Redbridge	74.84%
North East	Hartlepool	42.04%
North West	Manchester	64.43%
Northern Ireland	East Antrim	19.84%
Scotland	Shetland Islands	42.58%
South East	Slough	66.99%
South West	Plymouth	48.14%
Wales	The Vale of Glamorgan	30.69%
West Midlands	Walsall	66.34%
Yorkshire and the Humber	North Lincolnshire	52.31%



Make Your Mark



Over
3.5 million
votes cast

RECURRING ISSUES

x4

- Curriculum for Life
- Transport

x3

- Votes at 16
- Living Wage/minimum wage
- Work experience/getting ready for work

x2

- Mental health
- Bullying
- Tackling racism & religious discrimination

MYPs EQUAL OPPORTUNITY STATISTICS



52% are Female

33% identify as Black, Asian or a Minority Ethnic group



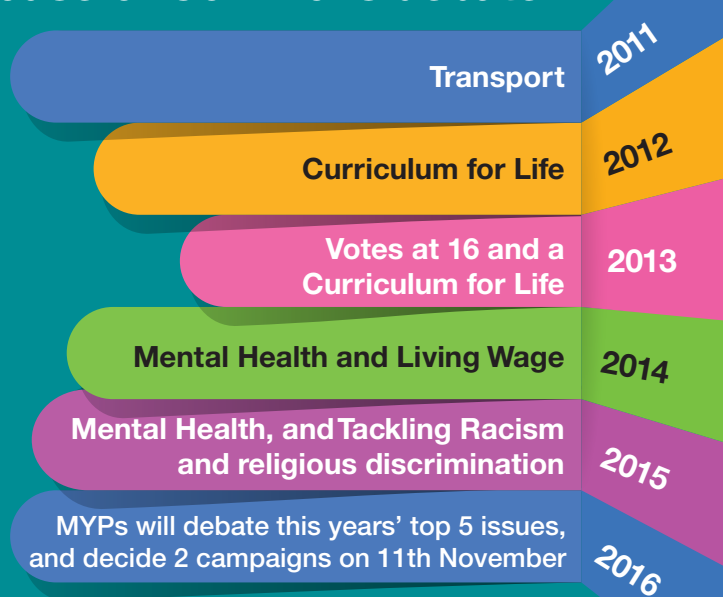
12% tell us they have a disability

9% are entitled to Free School Meals



2011-2016

Campaigns chosen at the MYP House of Commons debate:



DIVERSITY IN 2016

MYPs IN ENGLAND

Most Wealthy Ward

20%

20%

27%

18%

15%

Most Deprived Ward

SCHOOL, COLLEGE & YOUTH GROUPS [registered to take part in Make Your Mark 2016]

Most Wealthy Ward

19%

23%

20%

22%

16%

Most Deprived Ward

Data: Index of Multiple Deprivation, DCLG, 2015. England only