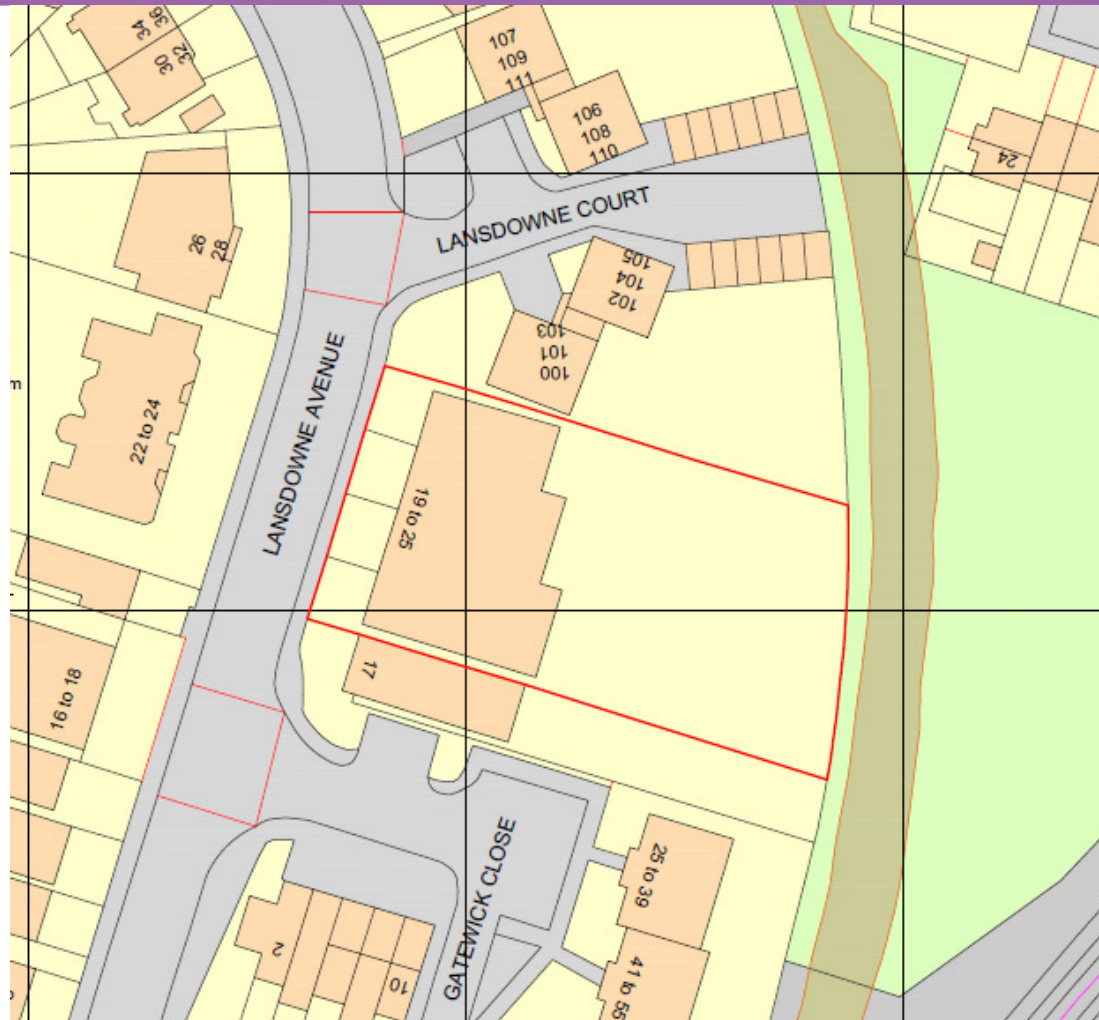


**19-25 Lansdowne Avenue,  
Slough SL1 3SG**

Ref: P/01158/033

# Site Location Plan



# Site frontage, with 100-103 Lansdowne Court on left



# Site frontage, with 17 Lansdowne Avenue on right





# The front of the site prior to demolition

(from 2016 ecological survey)



Rear of buildings prior to demolition,  
101-103 Lansdowne Court indicated by ↓



View across site as existing from Lansdowne Court,  
to Gatewick Close flats





# The 4-storey apartment building at Gatewick Close





# View from Gatewick Close across site to 101-103 Lansdowne Court



22 - 24 Lansdowne Avenue, opposite the site.





# View from north, across Lansdowne Court to site





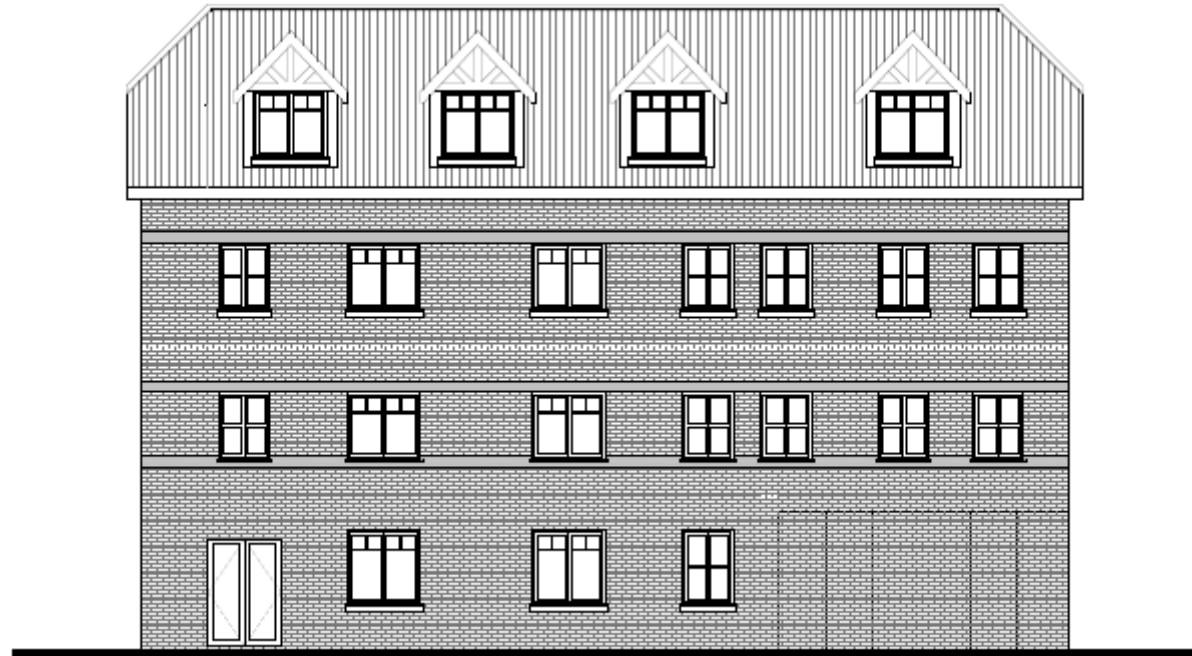
# Site layout plan



# West (front) elevation drawing - Block 1

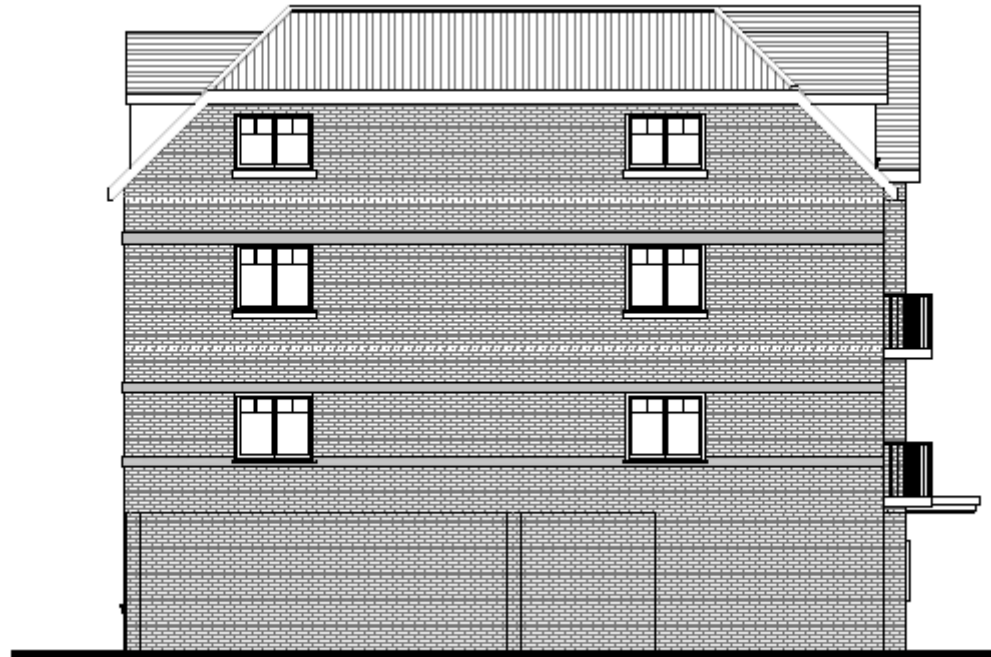


# East (rear) elevation drawing - Block 1

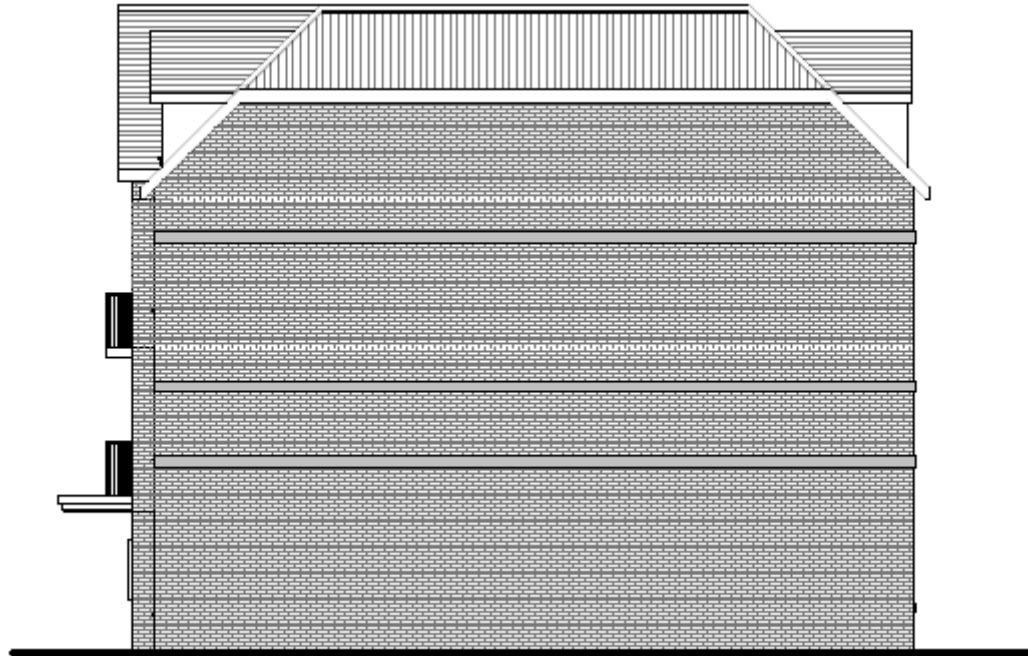




# North elevation drawing - Block 1



# South elevation drawing - Block 1

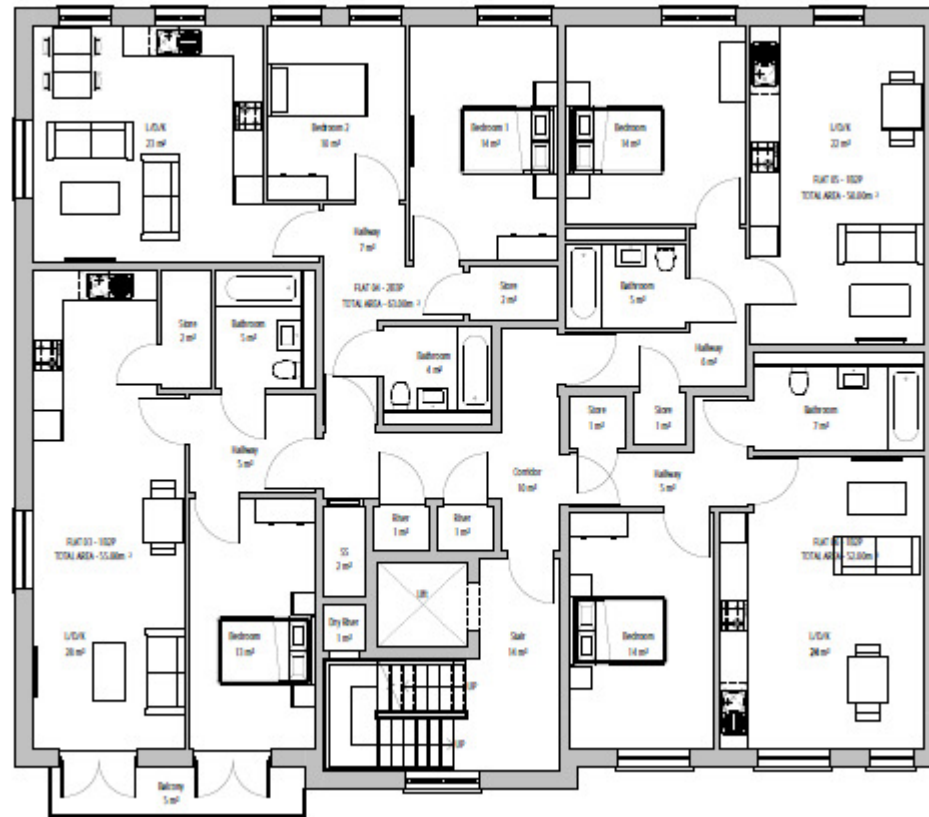


# Ground floor plan - Block 1

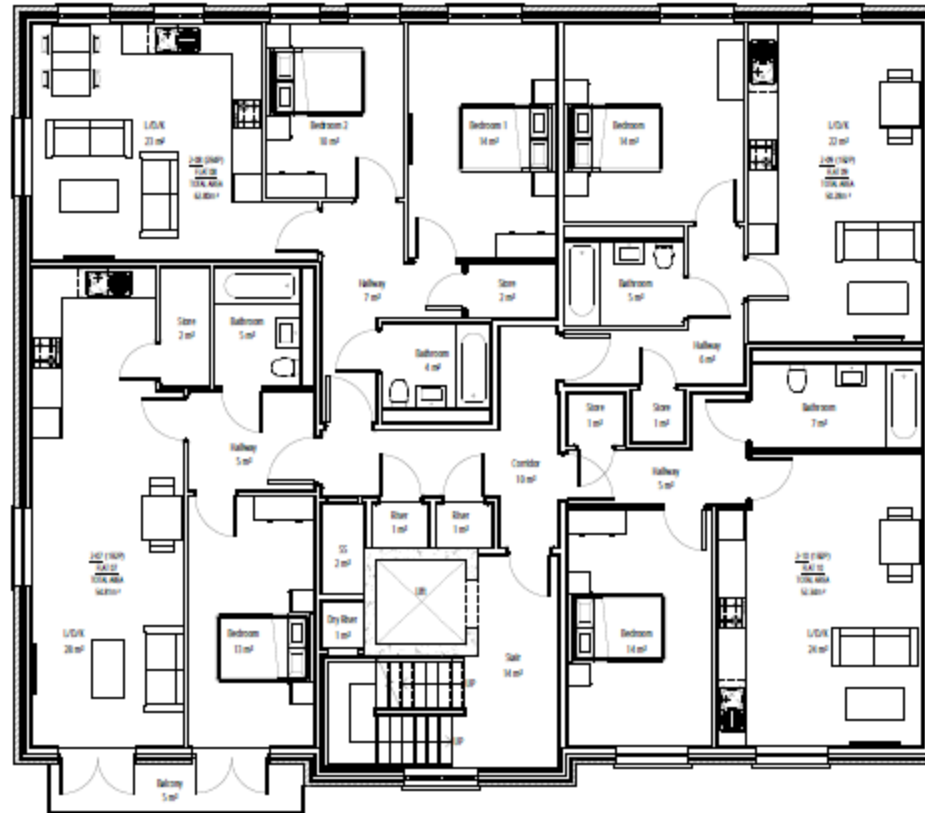




# First floor plans - Block 1

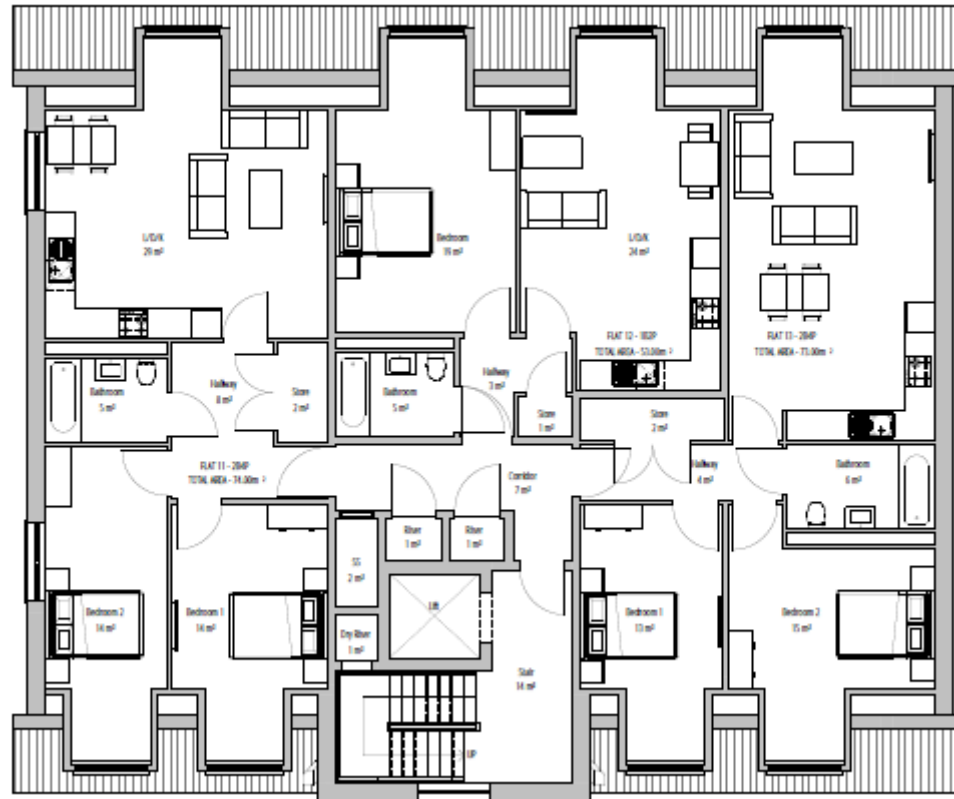


# Second floor plan - Block 1



1 Second Floor GA Plan  
1:50

# Third floor plan - Block 1



# West (front) elevation drawing - Block 2

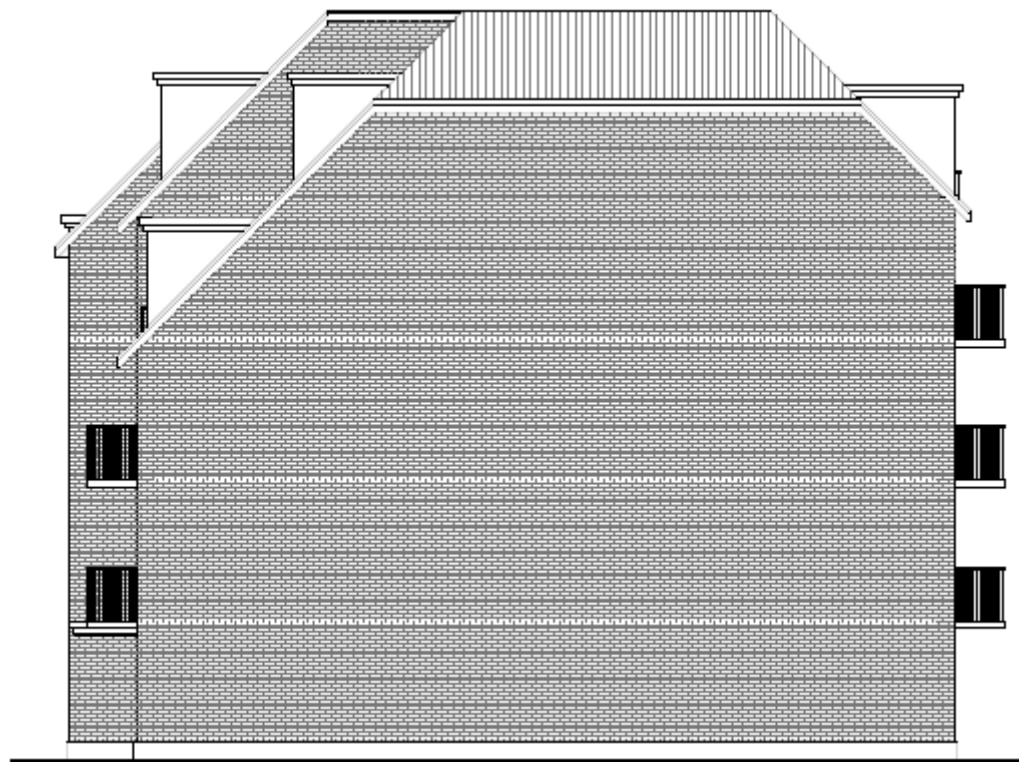




# East (rear) elevation drawing - Block 2



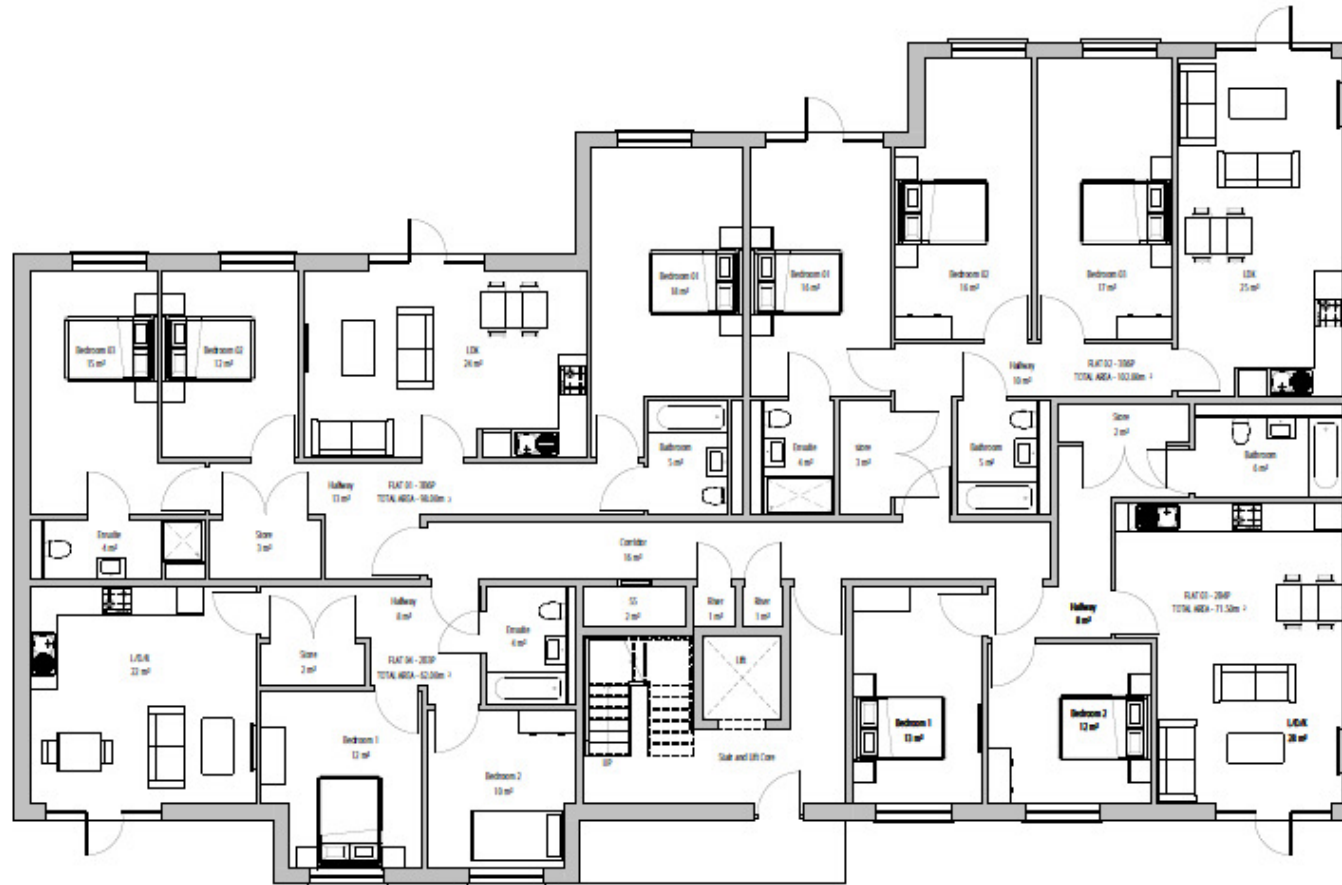
# South elevation drawing - Block 2



# North elevation drawing, Block 2

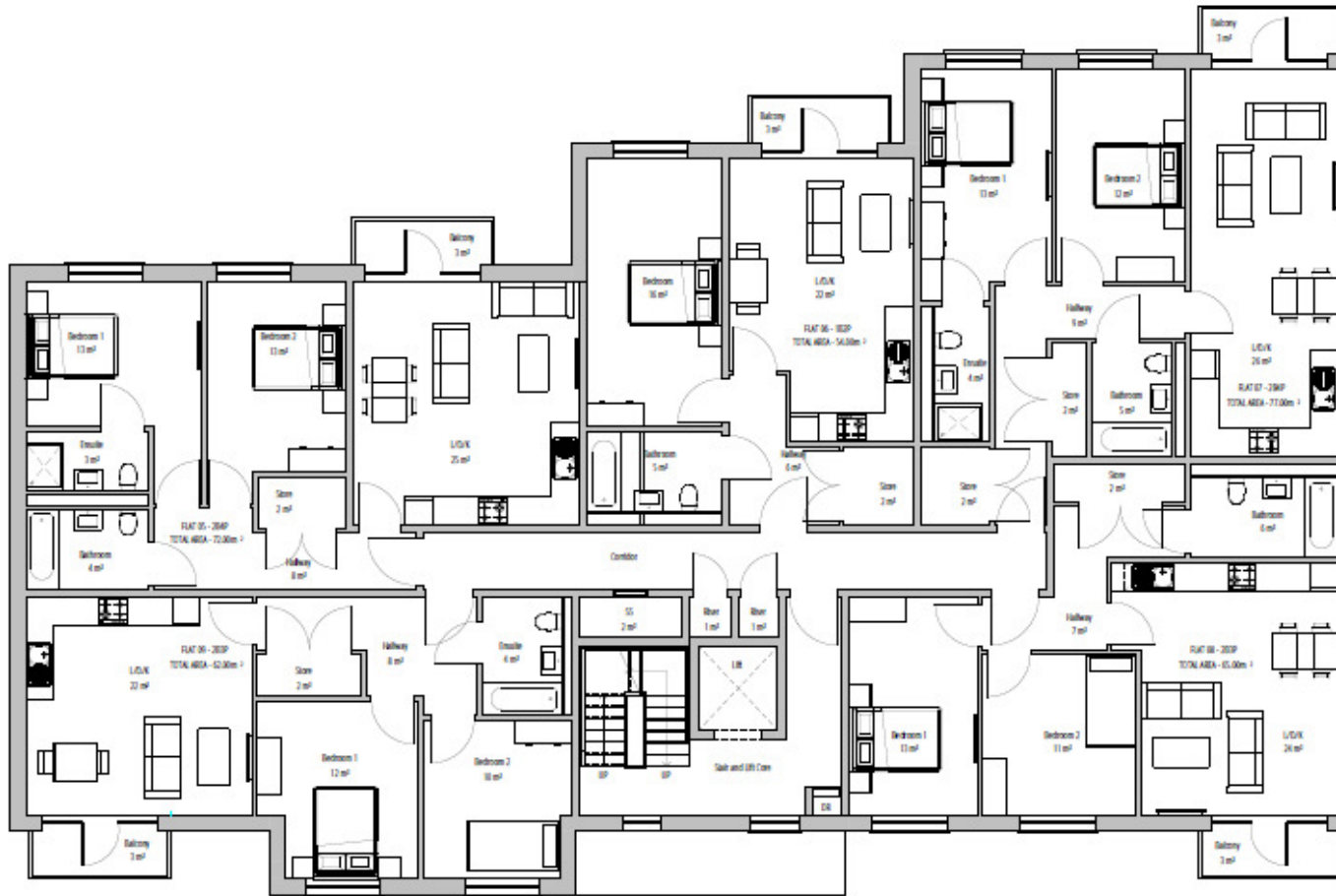


# Ground floor plan - Block 2





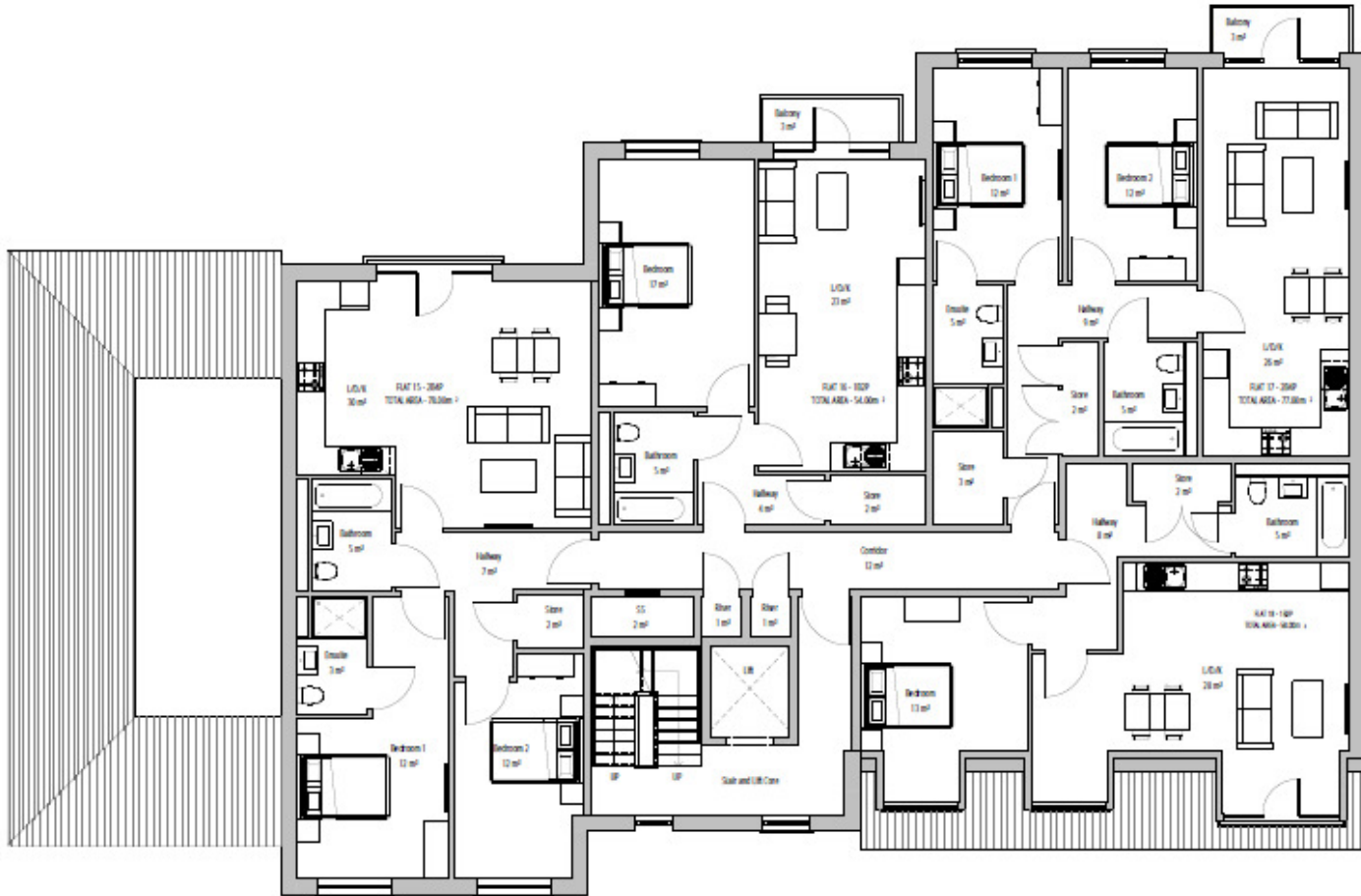
# First floor plan - Block 2



# Second floor plan - Block 2

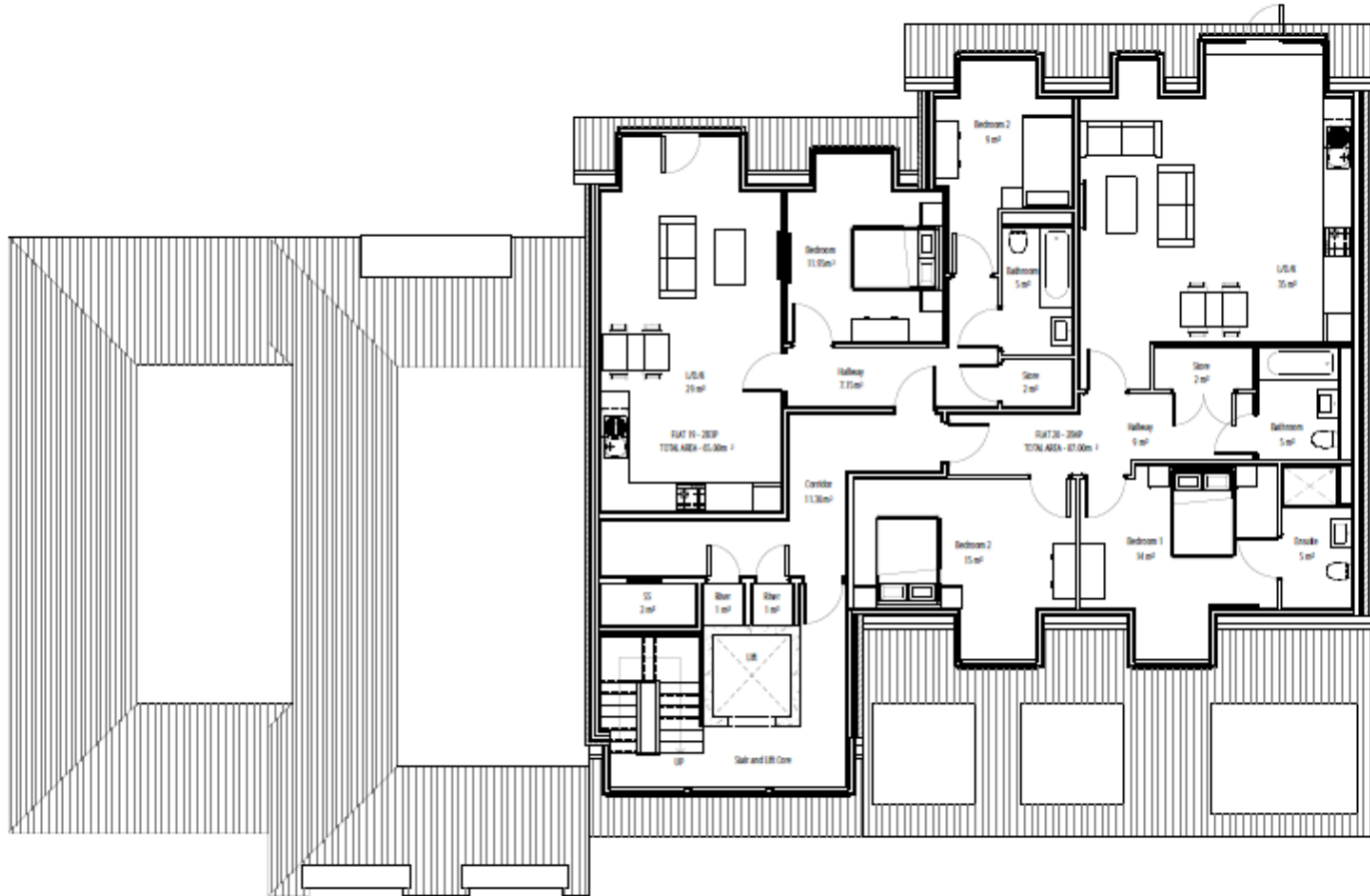


# Third floor plan - Block 2





# Fourth floor plan - Block 2



# Street elevation with comparative building heights

