

## **SLOUGH BOROUGH COUNCIL**

**REPORT TO:** Slough Wellbeing Board

**DATE:** 14<sup>th</sup> March 2022

**CHIEF OFFICER:** Stuart Lines, Director of Public Health

**CONTACT OFFICER:** Author: Dr Vanita Dutta, Public Health Programme Manager

### **PART I** **FOR CONSIDERATION AND COMMENTS**

#### **UPDATE ON THE 'PHARMACEUTICAL NEEDS ASSESSMENT (PNA)'**

1. **Purpose of Report**

This report presents to the Slough Wellbeing Board an update on Pharmaceutical Needs Assessment (PNA), progress to date and future direction of PNA and timescales.

2. **Recommendation(s)/Proposed Action**

That the Slough Wellbeing Board:

- Note the progress of Pharmaceutical Needs Assessment to date
- Consider and approve the proposed work programme and timelines

3. **The Slough Joint Wellbeing Strategy, the JSNA and the Five-Year Plan**

The [Slough Joint Wellbeing Strategy](#) (SJWS) details the priorities agreed for Slough with partner organisations. The SJWS has been developed using a comprehensive evidence base that includes the Joint Strategic Needs Assessment (JSNA) 2016-2020.

3a. **Slough Wellbeing Strategy Priorities**

Since April 2013 local Health and Wellbeing Board has been given a statutory responsibility to publish and keep up to date a statement of the needs for pharmaceutical services of the population in its area.

Development of PNA across Slough will support and inform the Slough Joint Wellbeing Strategy (SJWS) priorities.

The SJWS priorities are:

1. Starting Well
2. Integration (relating to Health & Social Care)
3. Strong, healthy and attractive neighbourhoods
4. Workplace health

### 3b. Five Year Plan Outcomes

*Explain which of the Five-Year Plan's outcomes the proposal or action will help to deliver.*

PNA will particularly contribute to the following three outcomes laid in Slough Five Year Plan:

- Outcome 1: Slough children will grow up to be happy, healthy and successful – through direct provision of national and locally commissioned services
- Outcome 2: Our people will be healthier and manage their own care needs– through direct provision of national and locally commissioned services
- Outcome 5: Slough will attract, retain and grow businesses and investment to provide opportunities for our residents - through the securing of appropriate services delivered through ongoing pharmaceutical businesses in the Slough area

### 4. Other Implications

#### (a) Financial

There are no financial implications of proposed action.

#### (b) Risk Management (Compulsory section to be included in **all** reports)

There are no risks as this report is for information only.

#### (c) Human Rights Act and Other Legal Implications (compulsory section to be included in **all** reports)

There are no Human Rights Act implication.

#### (d) Equalities Impact Assessment

An EIA is not necessary, but the result of PNA will augment and strengthen the SBC Equality duty through a refreshed needs assessment of pharmaceutical service provision in the area and the ability it affords to understand current population needs – including the needs of Slough residents with protected characteristics as set out in the Equality Act.

#### (e) Workforce

Currently the development of the Slough PNA is being led by PNA steering group which has both Est Berkshire Hub and local representation. The work is being carried out by the commissioned provider.

Although, services and capacity within Slough Public Health team have been stretched, in light of the COVID 19 pandemic and further impacted by section 114, the work on PNA is on track and there are no workforce implications identified.

## 5. **Supporting Information**

### **(a) Background**

Health and Wellbeing boards have a statutory duty to carry out a statement of needs for the pharmaceutical services for the population it serves every three years. This is known as a Pharmaceutical Needs Assessment (PNA). Due to the COVID 19 pandemic, nationally the timeframe for delivery of the 2021/22 PNAs was extended to October 2022.

The PNA describes the needs for the population and considers current provision of pharmaceutical services to assess whether they meet the identified needs of the population. The PNA considers whether there are any gaps in the delivery of pharmaceutical services.

PNAs are used by NHS England to make decisions on which NHS-funded services need to be provided by local community pharmacies. These services are part of local health care, contribute to public health and affect NHS budgets. The PNA may also be used to inform commissioners such as Clinical Commissioning Groups (CCGs) and Slough Borough Council of the current provision of pharmaceutical services and where there are any gaps in relation to the local health priorities. Where such gaps are not met by NHS England, these gaps may then be considered by local organisations.

### **(b) Timelines and progress**

Sloughs last PNA was published on 1<sup>st</sup> April 2018 and a refreshed PNA will need to be published by October 2022 as per national regulations.

The six Berkshire local authorities agreed to commission delivery of their pharmaceutical needs assessments to an external provider due to capacity gaps in the local public health system and to ensure a coordinated and efficient delivery.

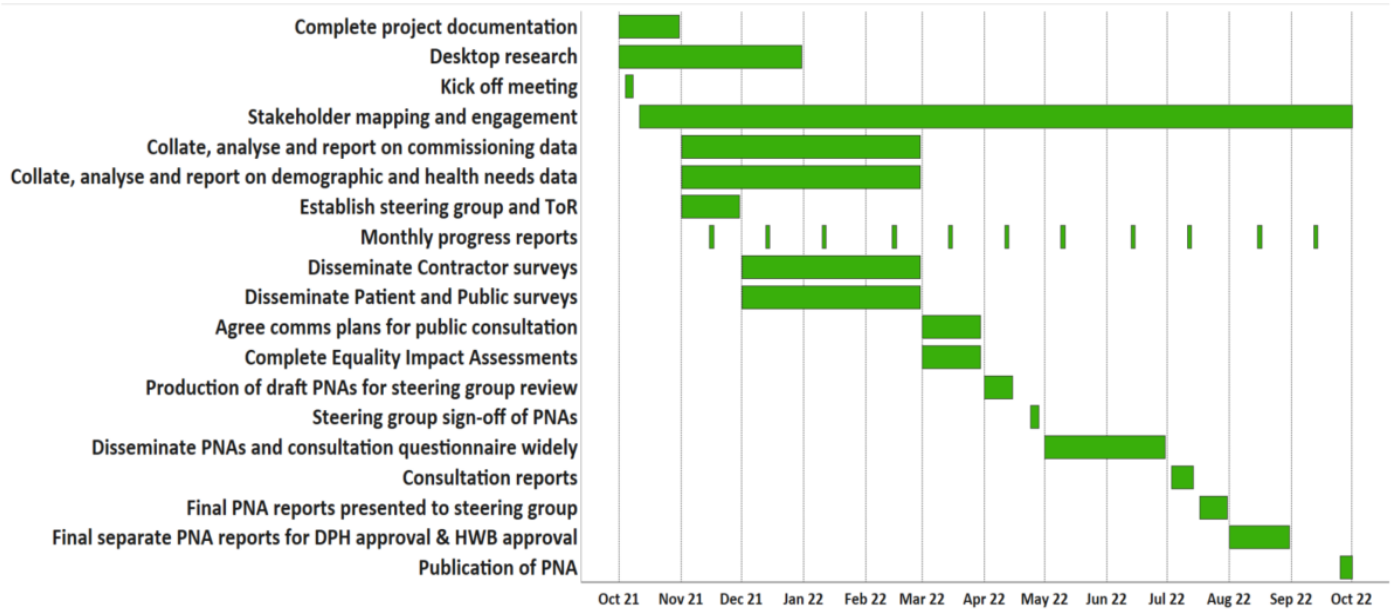
Healthy Dialogues was awarded the contract after competitive procurement; the Berkshire East Hub (shared team) are the delegated contract manager and led the procurement process.

A PNA steering group has been established, which includes leads from six local authorities, ICS, LPC, NHSE, VS and communication leads. Berkshire East Hub oversees the PNA development and has regular project assurance meetings with Healthy Dialogues.

A robust project plan for delivering PNAs has been developed and has identified clear work streams that meet the national requirements.

## Project Phase GANNT

The GANNT below illustrates the project timeline.



## Progress RAG

TASK LIST				
Task	DUE DATE	% COMPLETE	Likelihood RAG	Notes
Kick off meeting	08/10/2021	100%	Green	
Stakeholder mapping and engagement	01/10/2022	75%	Green	
Complete project documentation	31/10/2021	100%	Green	
Desktop research	31/12/2021	75%	Green	
Establish steering group and ToR	30/11/2021	100%	Green	
Disseminate Public survey	28/02/2022	75%	Green	Nearly complete
Disseminate Contractor survey	28/02/2022	25%	Orange	Underway - low initial response rate
Collate and process commissioning data	28/02/2022	75%	Green	Seeking clarification on some data received
Analyse commissioning data	28/02/2022	25%	Green	
Collate, analyse and report on demographic and health needs data	28/02/2022	50%	Green	
Complete Equality Impact Assessments	30/03/2022	0%	Green	
Agree comms plans for public consultation	30/03/2022	0%	Green	
Production of draft PNAs for steering group review	15/04/2022	0%	Green	
Steering group sign-off of PNAs	28/04/2022	0%	Green	
Disseminate PNAs and consultation questionnaire widely	30/06/2022	0%	Green	
Consultation reports	14/07/2022	0%	Green	
Final PNA reports presented to steering group	31/07/2022	0%	Green	
Final separate PNA reports for steering group & HWB approval	31/08/2022	0%	Green	
Publication of PNA	01/10/2022	0%	Green	

Current progress is on track against the project plan timeframe.

Contractor survey has been disseminated. Progress is typically slow but ongoing. Deadline has been extended.

Public survey has been widely published and promoted. Consideration has also been given to engage with target population group – Parents of children with SEND, ESOL group, young people and digitally excluded cohort.

In total we have 131 responses, with 50% from ethnic minority which is a representative sample of the Slough population.

Collection of commissioned data is complete for Slough.

Data collection – provider has processed the NHSE pharmacy data and have begun mapping. This will be shared with the members at the next update.

First draft of the PNA reports will be presented to the Steering Group in April 2022. Thereafter the reports will be disseminated for public consultation as per the regulations.

The final draft of the PNA will be presented to the Health and Wellbeing Boards in August 2022 for approval.

Should any issues arise in the production of the PNA, these will be raised with the appropriate Slough Wellbeing Board in a timely manner.

## 6. **Comments of Other Committees**

NA

## 7. **Conclusion**

The Slough Wellbeing Board is requested to note the current progress in delivering the PNA. Since April 2013, Health and Wellbeing board have statutory duty to carry out a statement of needs for the pharmaceutical services for population it serves every three years.

Due to the Covid-19 pandemic, nationally the timeframe for delivery of the 2021/22 PNAs has been extended to October 2022.

Collaborative approach to developing PNAs across Berkshire was agreed.

The commissioned provider 'Healthy Dialogues' have produced a project plan. Current progress is on track, with mitigation of current issues in place.

First draft of PNA to be produced in April 2022 and final draft of PNA for Slough Wellbeing Board approval will be presented in August 22.

## 8. **Background Papers**

None