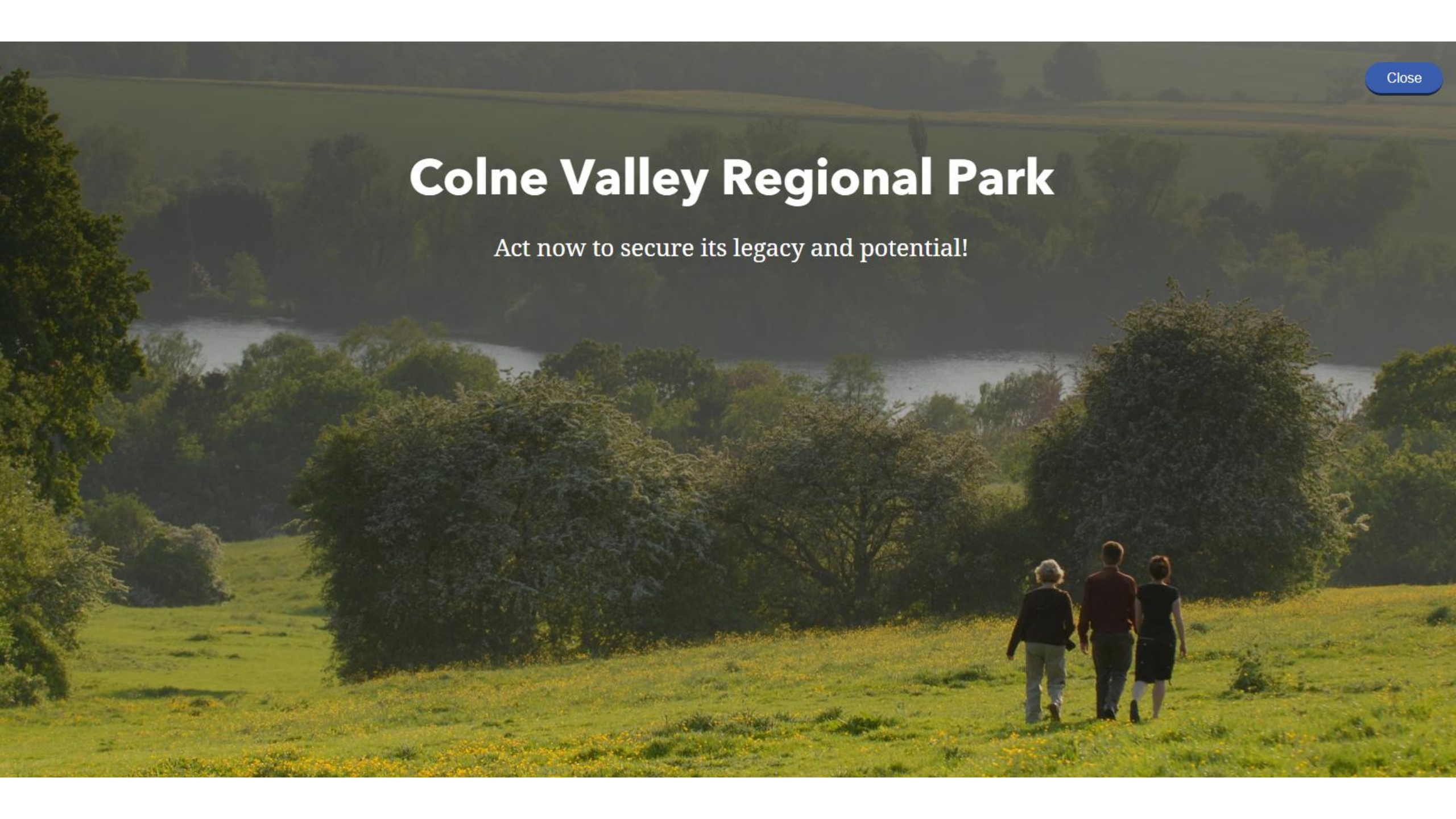
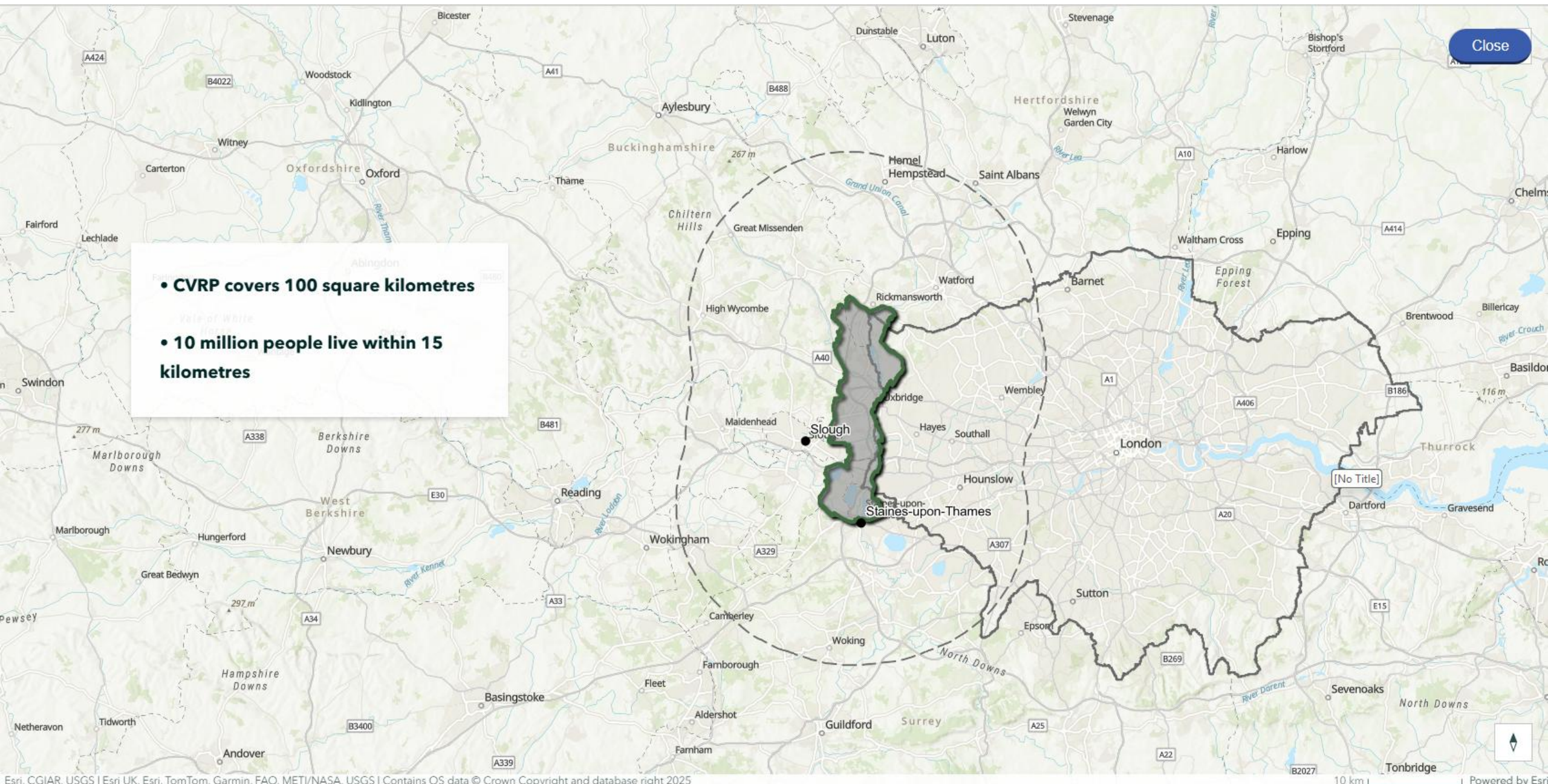


Close

Colne Valley Regional Park

Act now to secure its legacy and potential!





Close

CVRP attracts 2 million visitors a year from London, Surrey, Berkshire, Buckinghamshire, Hertfordshire and further afield.

[No Title]

Close

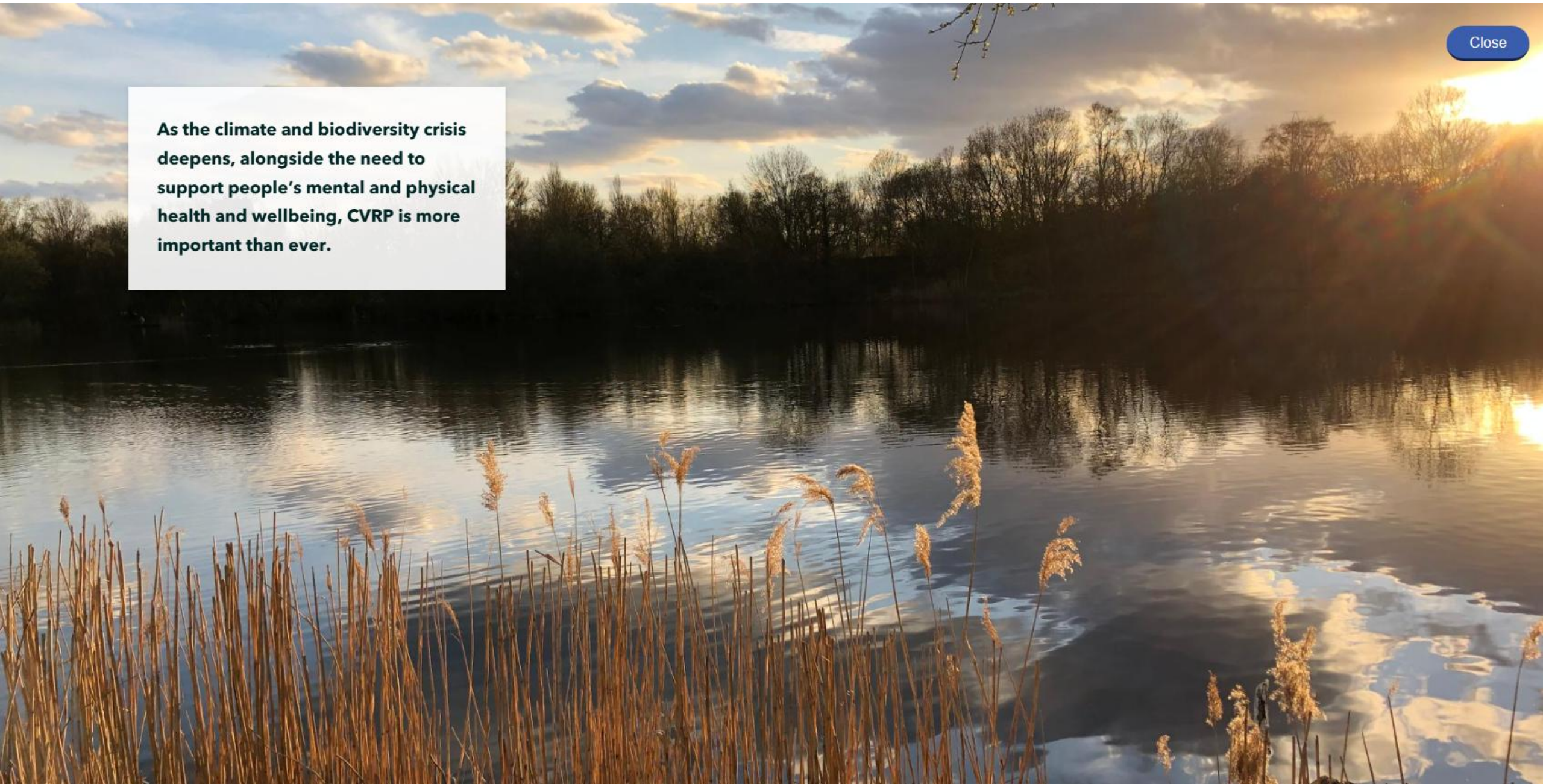
With its wildlife habitats, rivers and water bodies, recreation routes, farmland and historic settlements - CVRP provides accessible countryside for London and the western Home Counties.

[No Title]



Close

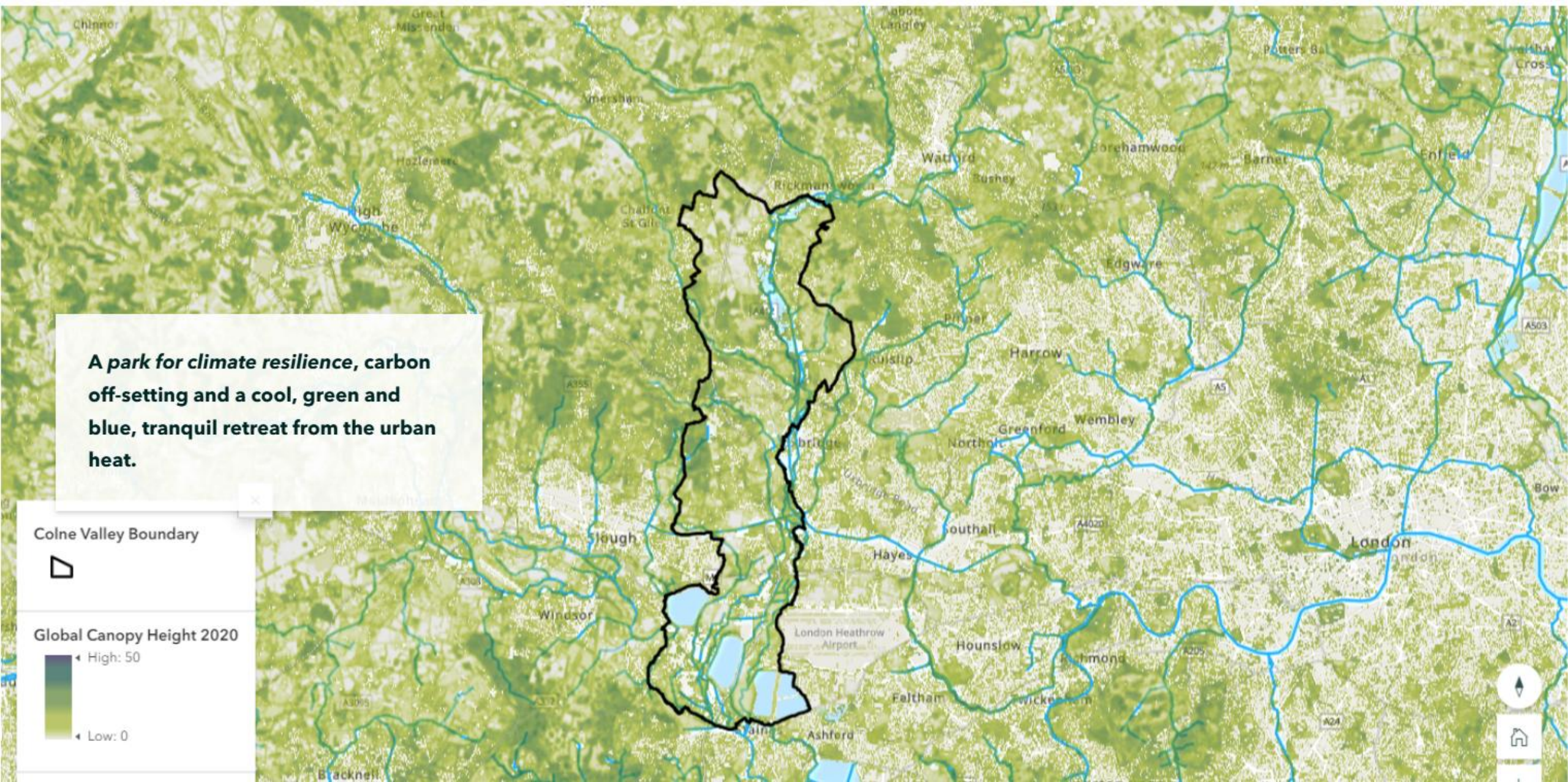
As the climate and biodiversity crisis deepens, alongside the need to support people's mental and physical health and wellbeing, CVRP is more important than ever.

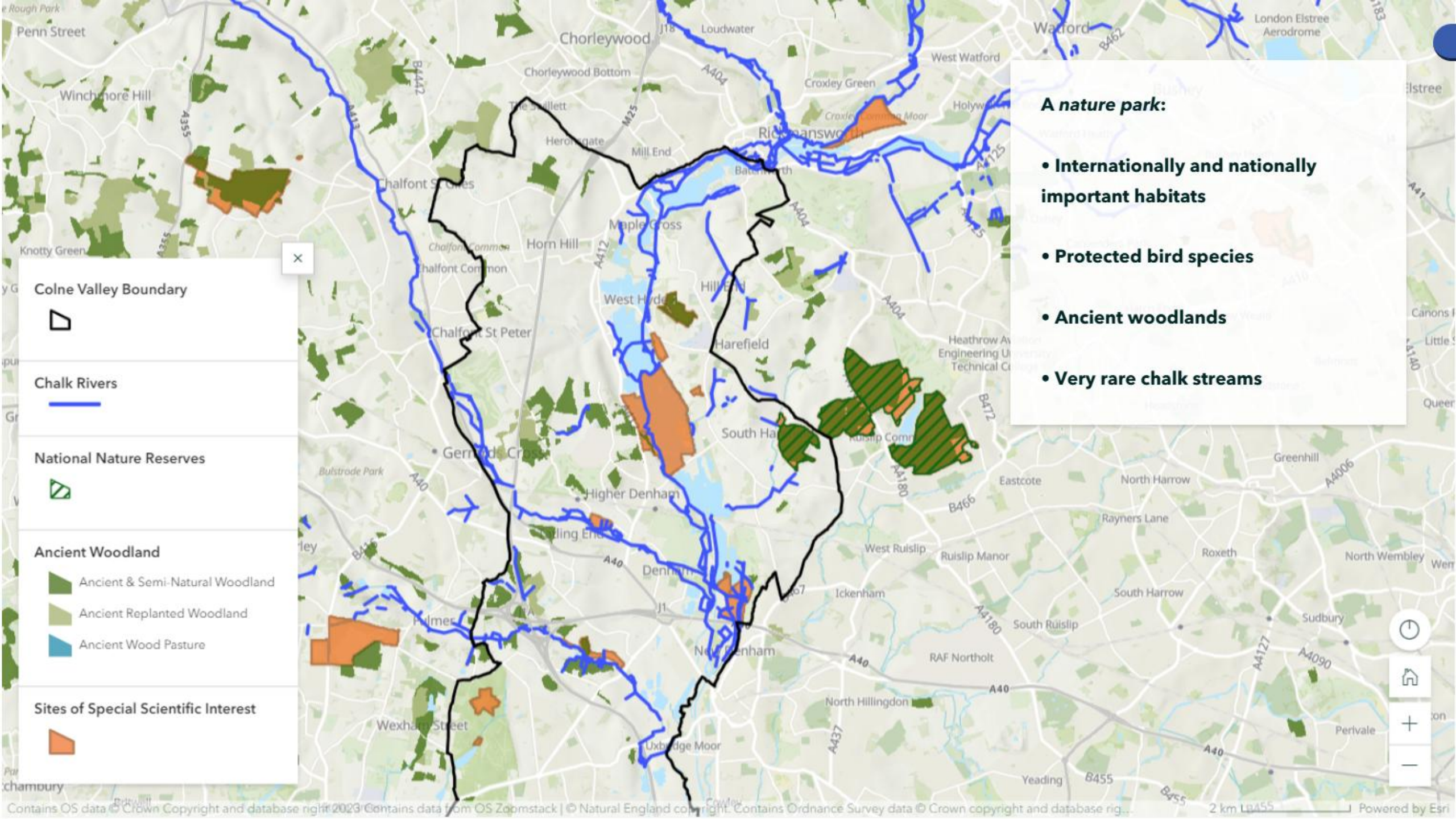


But as this story map shows, while it has a great legacy and enormous potential, CVRP is in serious decline, due to pollution, development pressures, fragmentation of habitats, lack of adequate protection and severe underfunding.



CVRP today - features and benefits





Colne Valley Boundary



Chalk Rivers



National Nature Reserves



Ancient Woodland

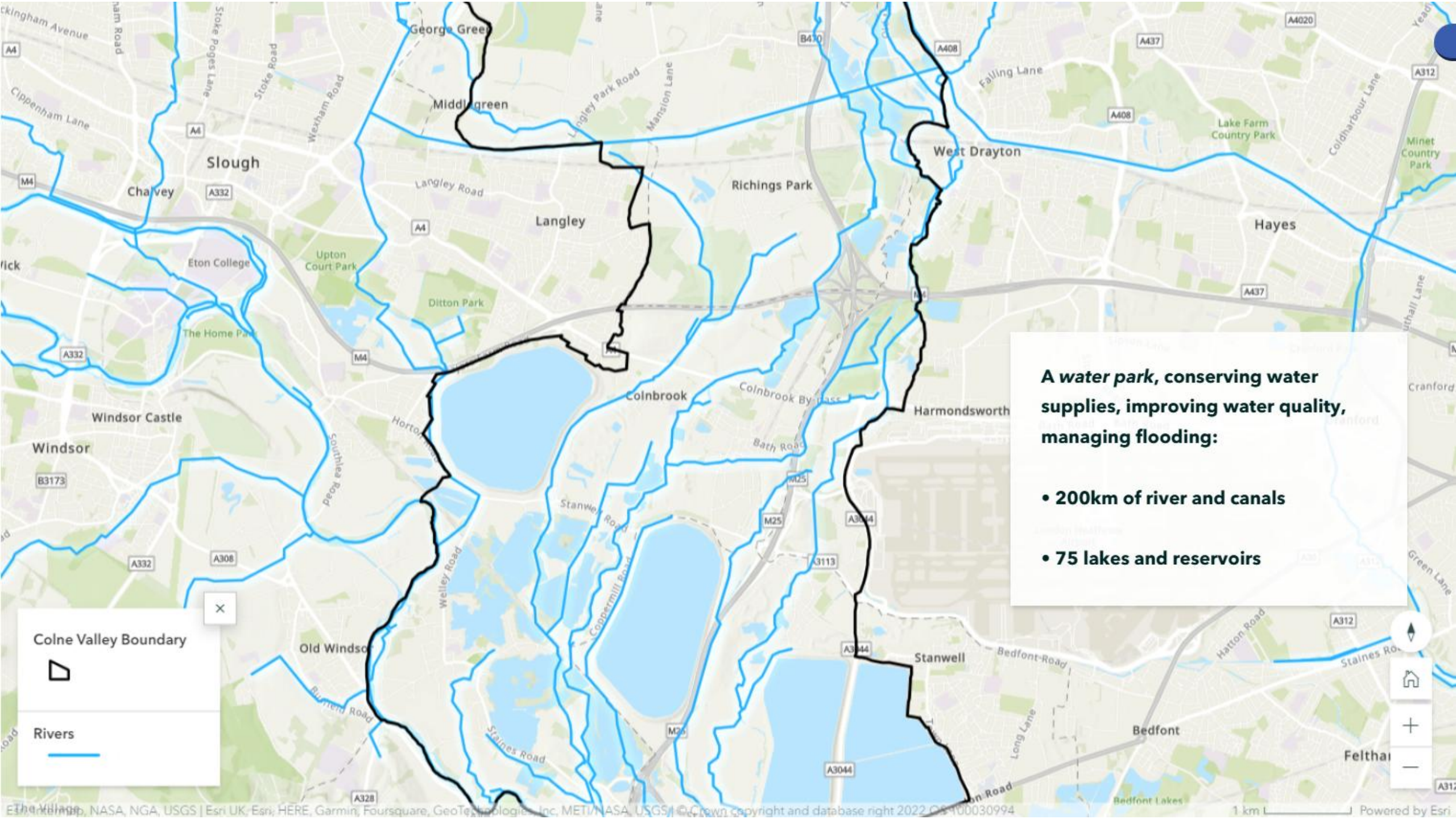
- Ancient & Semi-Natural Woodland
- Ancient Replanted Woodland
- Ancient Wood Pasture

Sites of Special Scientific Interest



A nature park:

- Internationally and nationally important habitats
- Protected bird species
- Ancient woodlands
- Very rare chalk streams

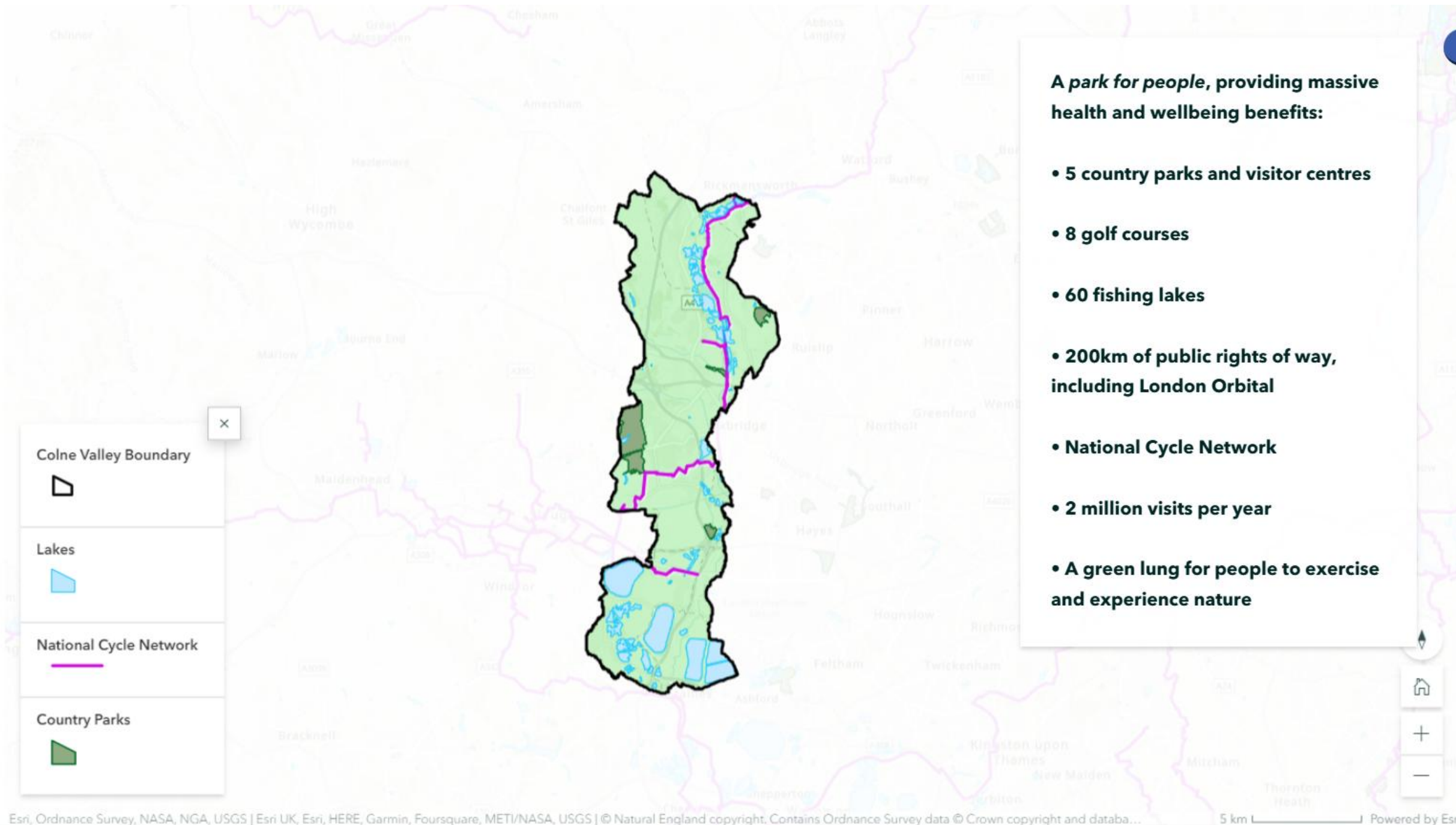


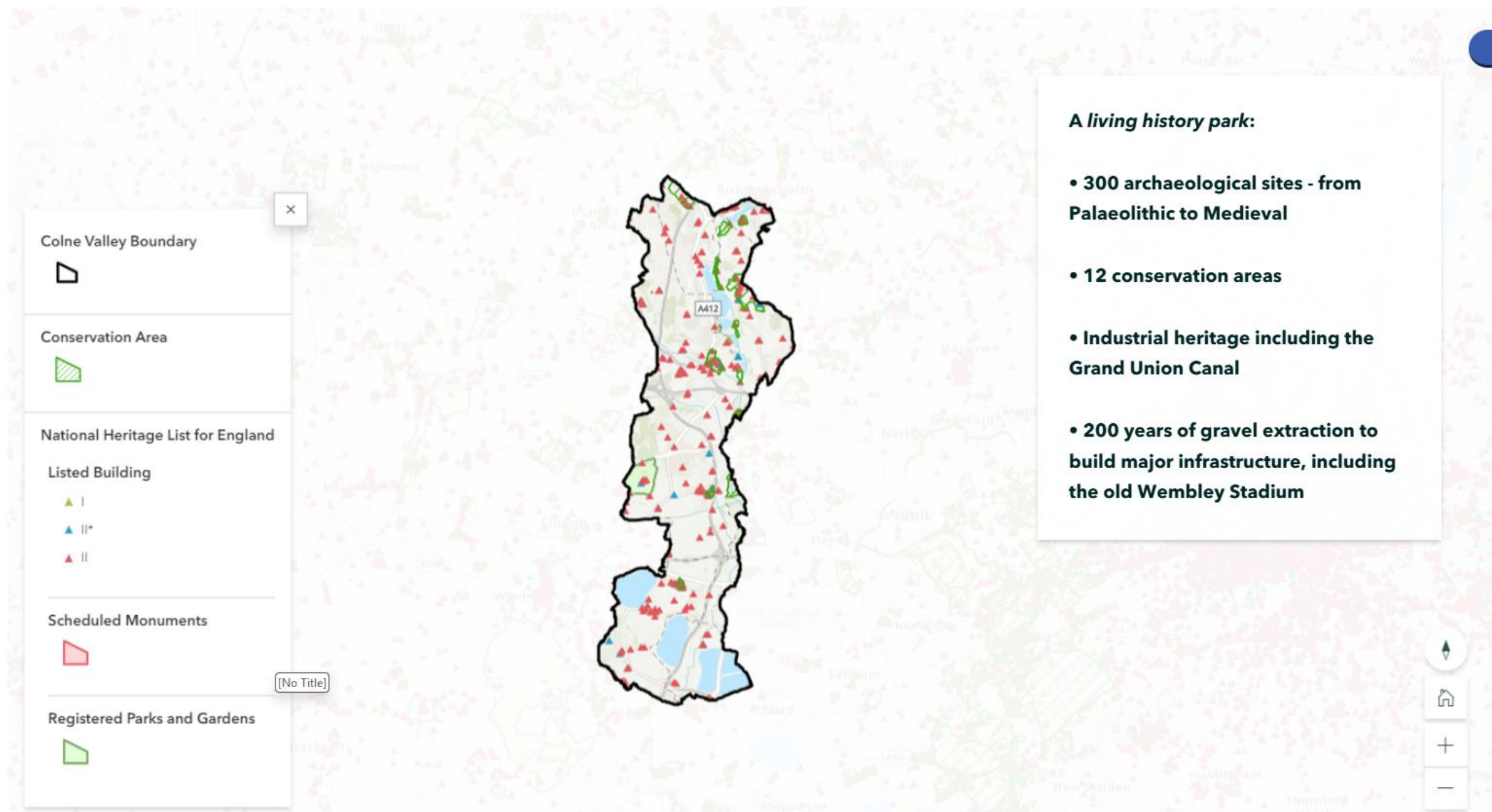
Colne Valley Boundary

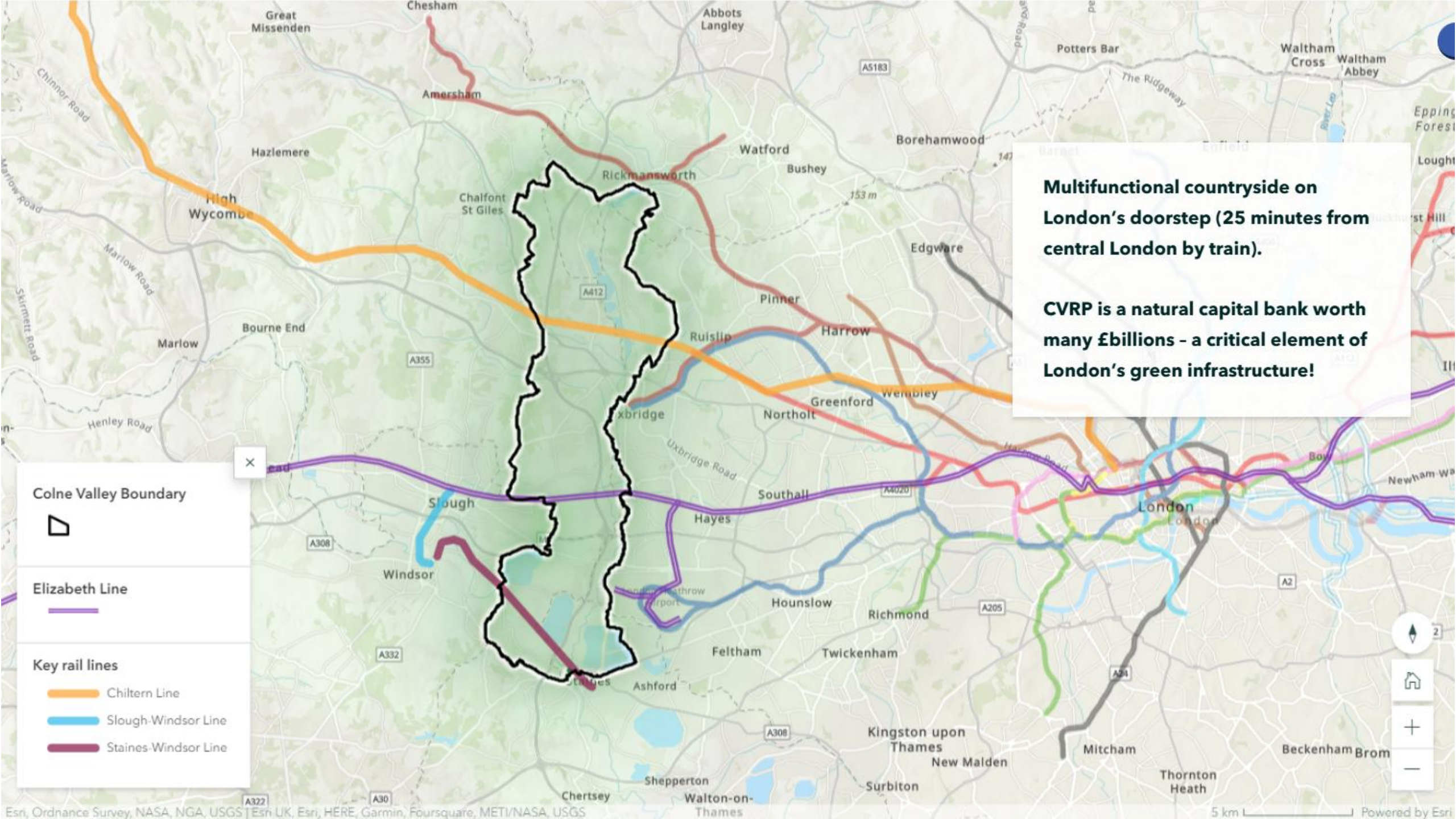
Rivers

A water park, conserving water supplies, improving water quality, managing flooding:

- 200km of river and canals
- 75 lakes and reservoirs







Multifunctional countryside on London's doorstep (25 minutes from central London by train).

CVRP is a natural capital bank worth many £billions - a critical element of London's green infrastructure!

Colne Valley Boundary



Elizabeth Line

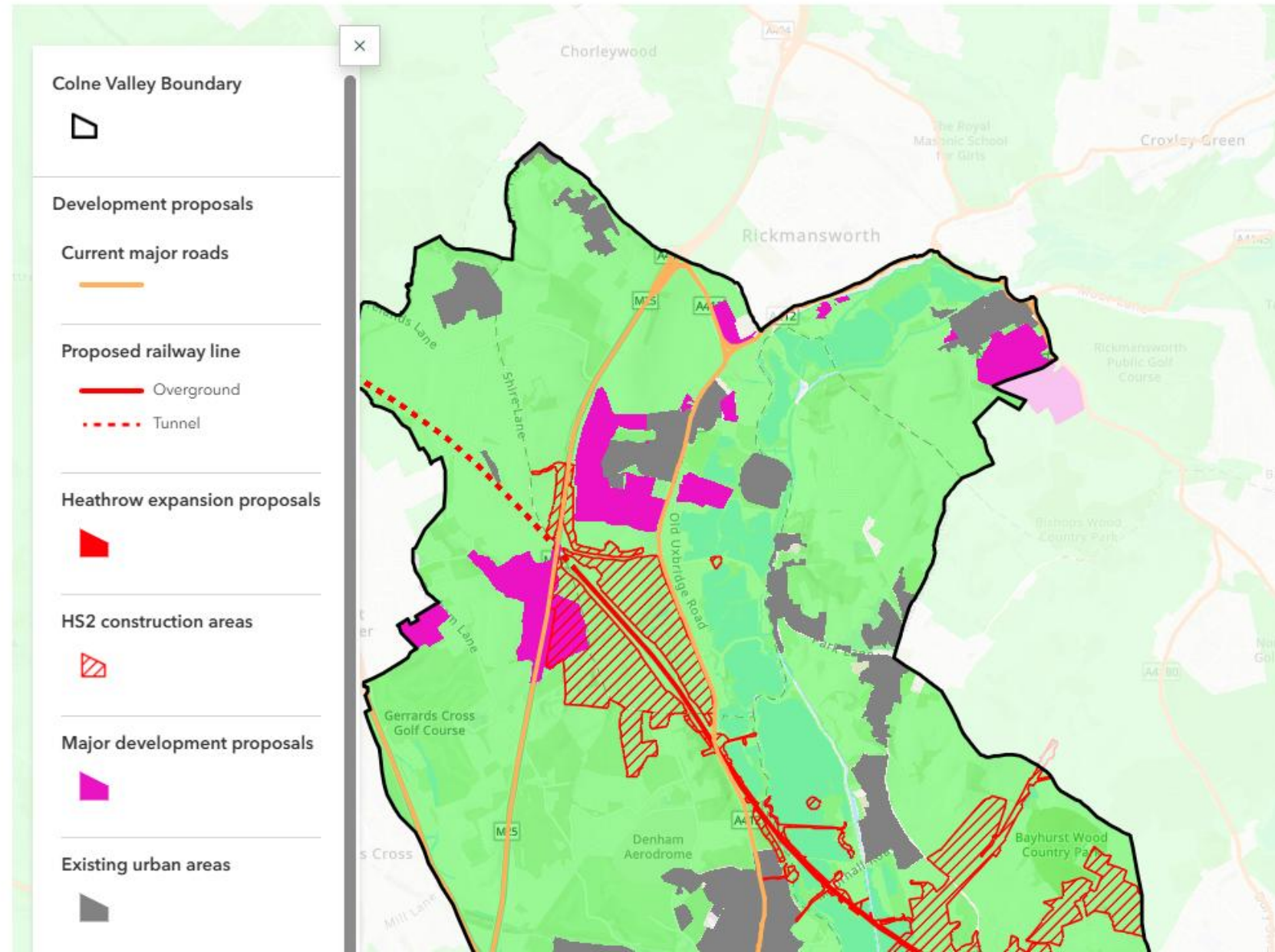


Key rail lines

- Chiltern Line
- Slough-Windsor Line
- Staines-Windsor Line

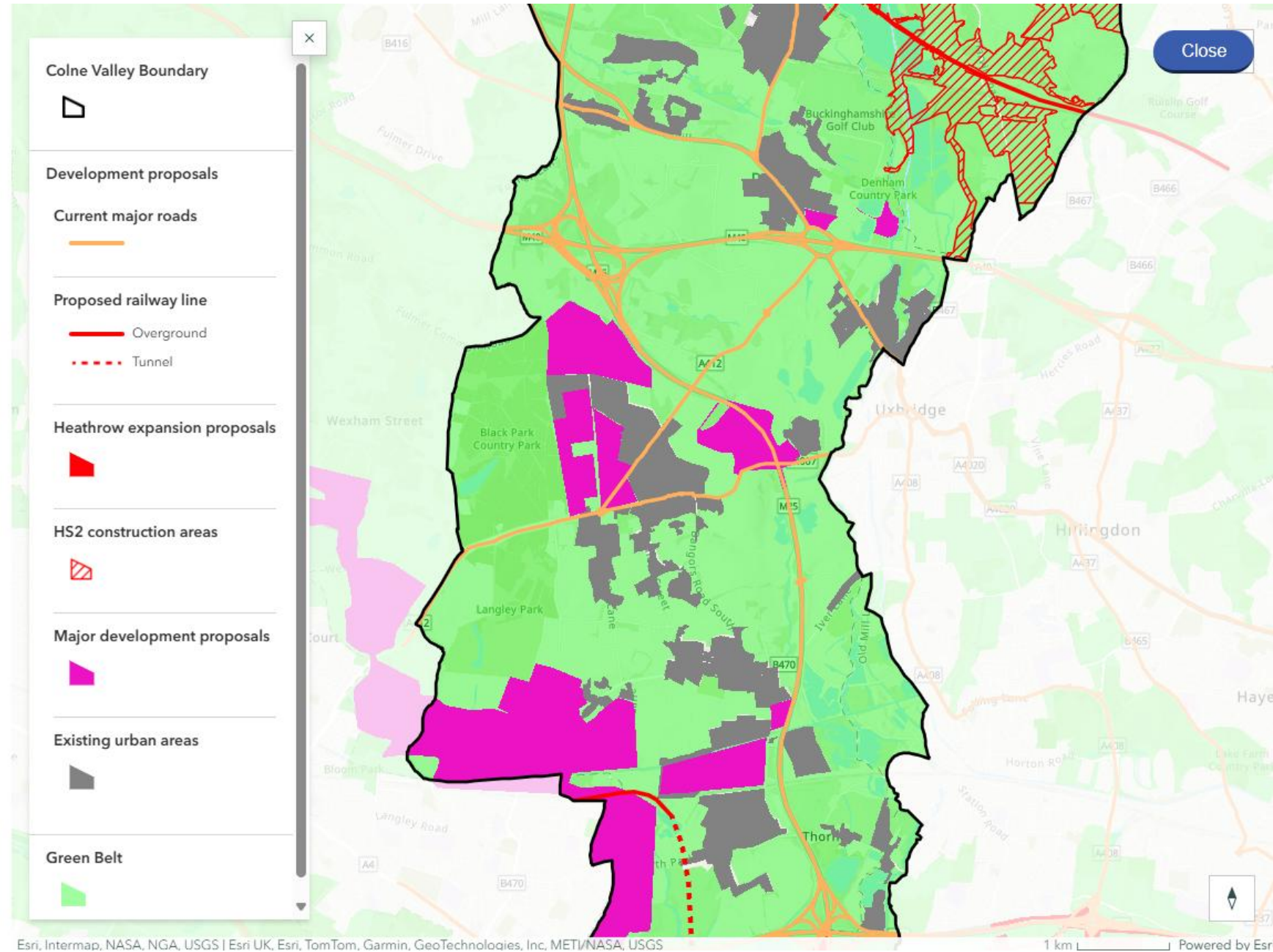
CVRP - current pressures and challenges

Current Green Belt policy and the use of 'special circumstances' has resulted in inappropriate and damaging development. The integrity and value of CVRP park is at a tipping point.

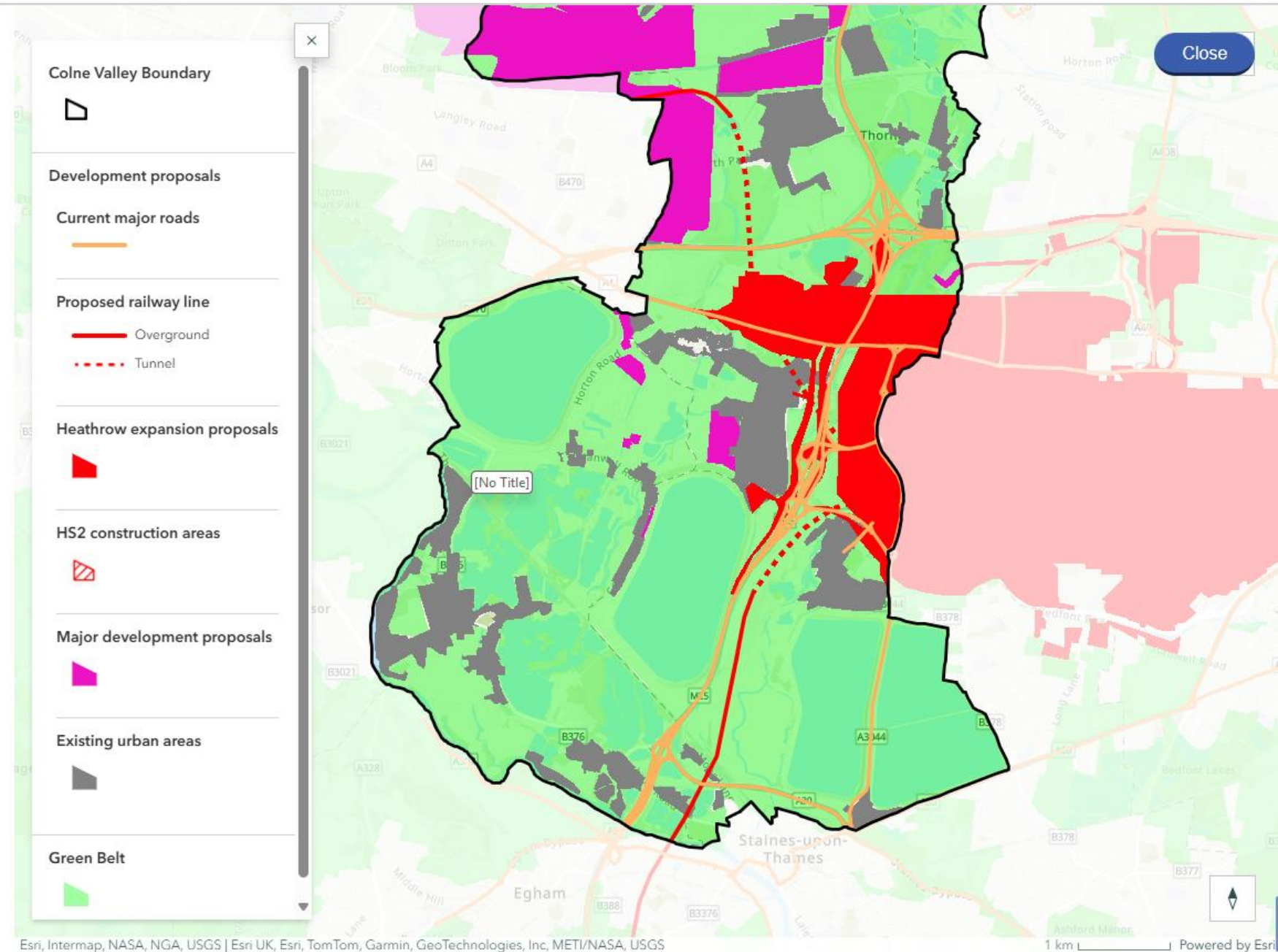


Key impacts of development include:

- Landscape and visual degradation
- Fragmentation of habitat and rights of way networks
- Pollution and blight
- Lost opportunities for countryside connectivity




CVRP also struggles with limited funds for management and maintenance in the face of urban fringe pressures.



The Future of CVRP is in your hands!

Close



Proposed path to a secure and sustainable future for CVRP:

- **Business as usual is not an option.**
- **Address loopholes in national planning policy that let major development through without strategic improvement to our Green Belt.**
- **CVRP needs to be recognised and positively supported in Local Plans and the new London Plan and also in emerging Local Nature Recovery Strategies - with the aim of both protecting the existing park and identifying opportunities to enhance and extend it so that it provides even greater benefits for people and nature.**



- CVRP should be recognised as a potential forerunner of positive planning and management of Green Belt land to achieve multiple benefits - a regional park approach for others to follow.

- Increased capital and revenue funding is required, from both public and private sectors, to improve facilities and connectivity.

[No Title]

