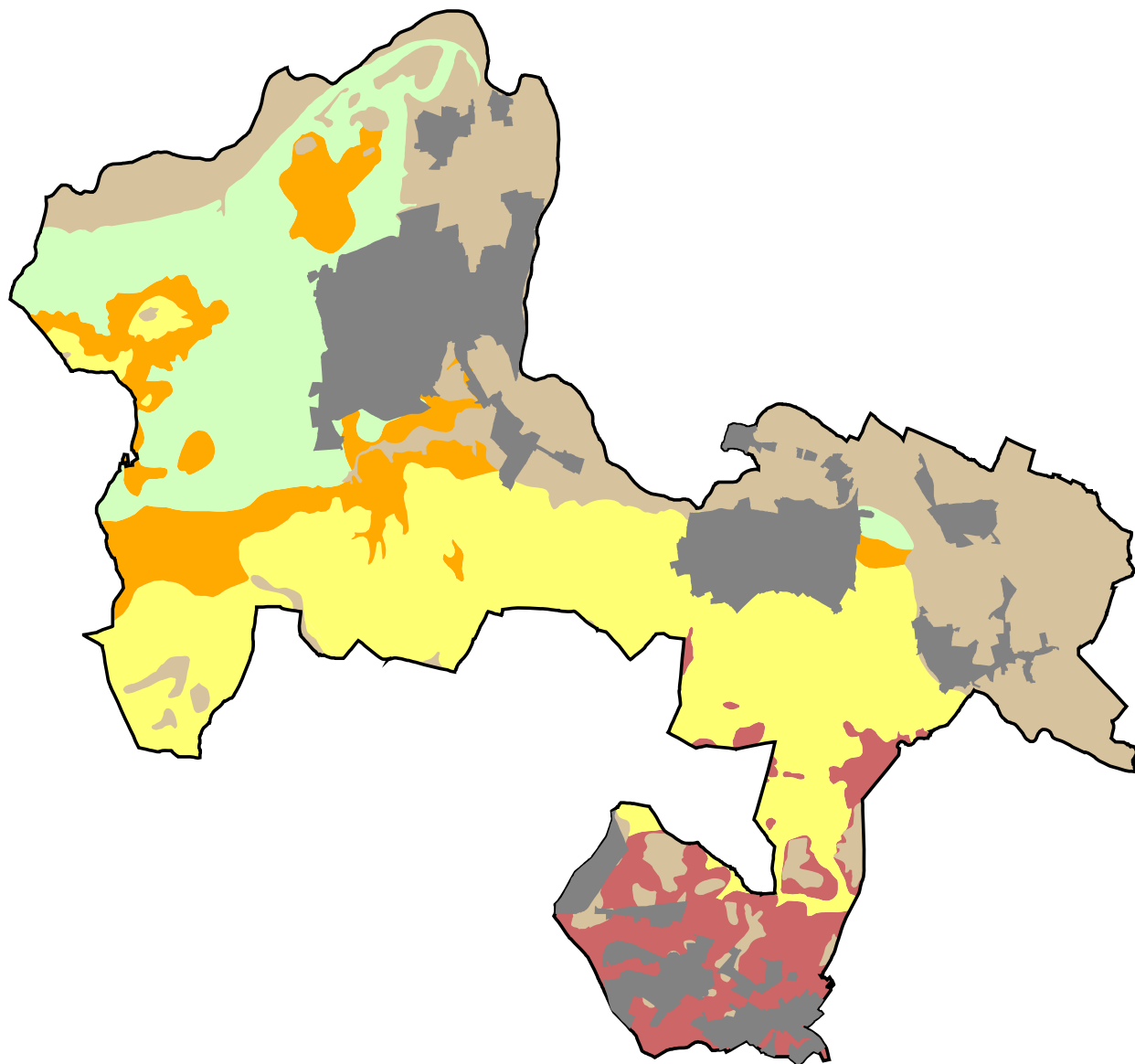


## Geology



Source: British Geological Survey Data



### Appendix 4.1

CHKD. SJD APP. IH DATE September 2004

SCALE 1:100,000 STATUS Final DWG.No. 1811LO/4.1

© CAD11811wm\A3\Appendix\1811\_geology.mxd

This map is reproduced from Ordnance Survey material with the permission of Ordnance Survey on behalf of the Controller of Her Majesty's Stationary Office© Crown copyright. Unauthorised reproduction infringes Crown copyright and may lead to prosecution or civil proceedings. Royal Borough of Windsor and Maidenhead, License Number LA086118, 2000.

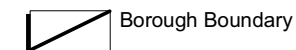
Based upon Ordnance Survey map with the permission of the controller of H.M.S.O.© Crown copyright Reproduced under licence No. 189198 © Landscape Design Associates Quality Assured to BS EN ISO 9001 : 2000



LANDSCAPE DESIGN ASSOCIATES

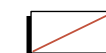
Oxford  
Tel: 01865 887050

## Landform



Borough Boundary

Metres Above Sea Level



131-140m



121-130m



111-120m



101-110m



91-100m



81-90m



71-80m



61-70m



51-60m



41-50m



31-40m



21-30m



11-20m

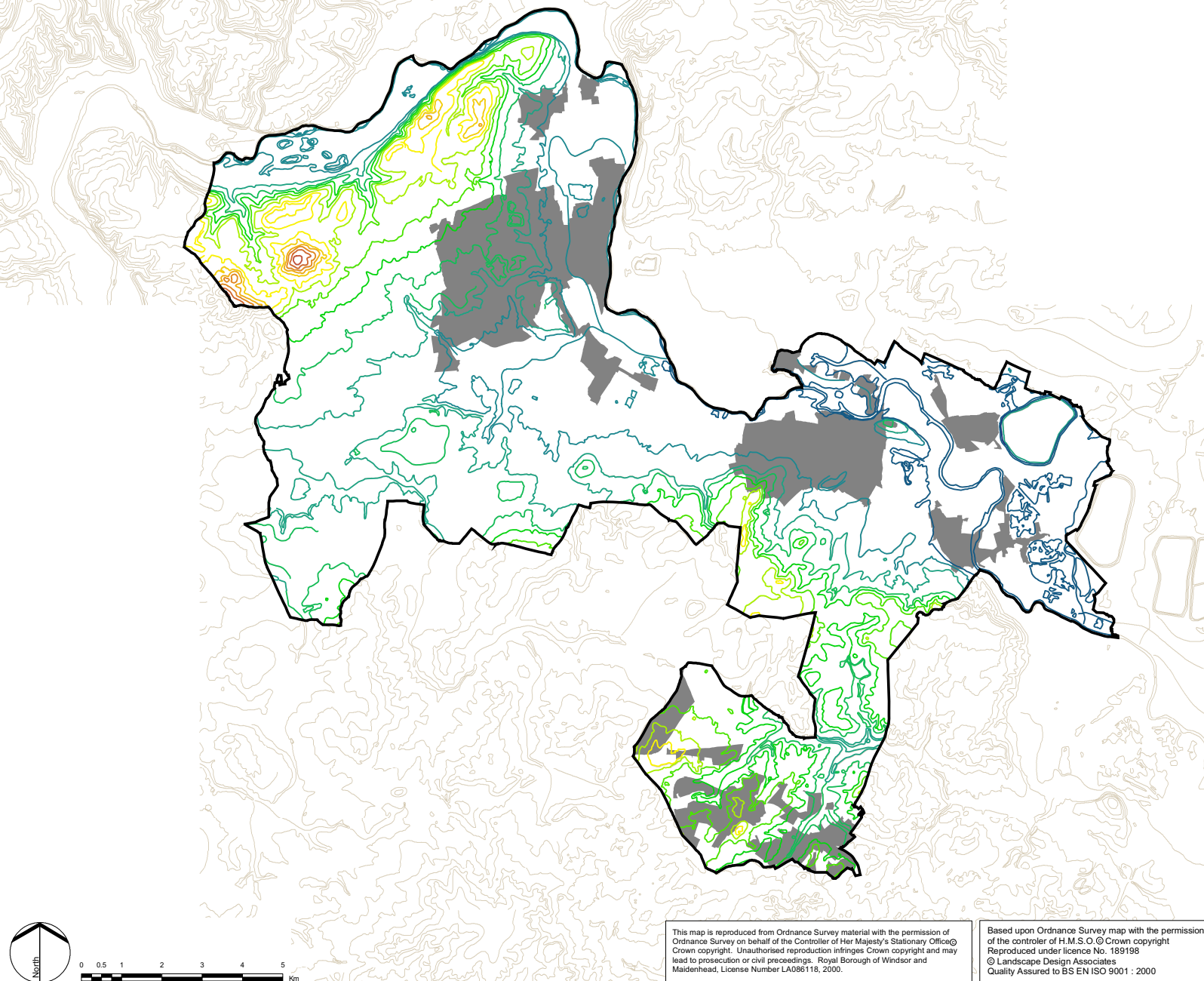


0-10m



Settlements Excluded  
from the Green Belt

Source: Royal Borough of Windsor  
and Maidenhead



This map is reproduced from Ordnance Survey material with the permission of Ordnance Survey on behalf of the Controller of Her Majesty's Stationary Office. Crown copyright. Unauthorised reproduction infringes Crown copyright and may lead to prosecution or civil proceedings. Royal Borough of Windsor and Maidenhead, License Number LA086118, 2000.

Based upon Ordnance Survey map with the permission of the controller of H.M.S.O. © Crown copyright. Reproduced under licence No. 189196. © Landscape Design Associates. Quality Assured to BS EN ISO 9001 : 2000



LANDSCAPE DESIGN ASSOCIATES

## Appendix 4.2

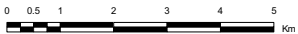
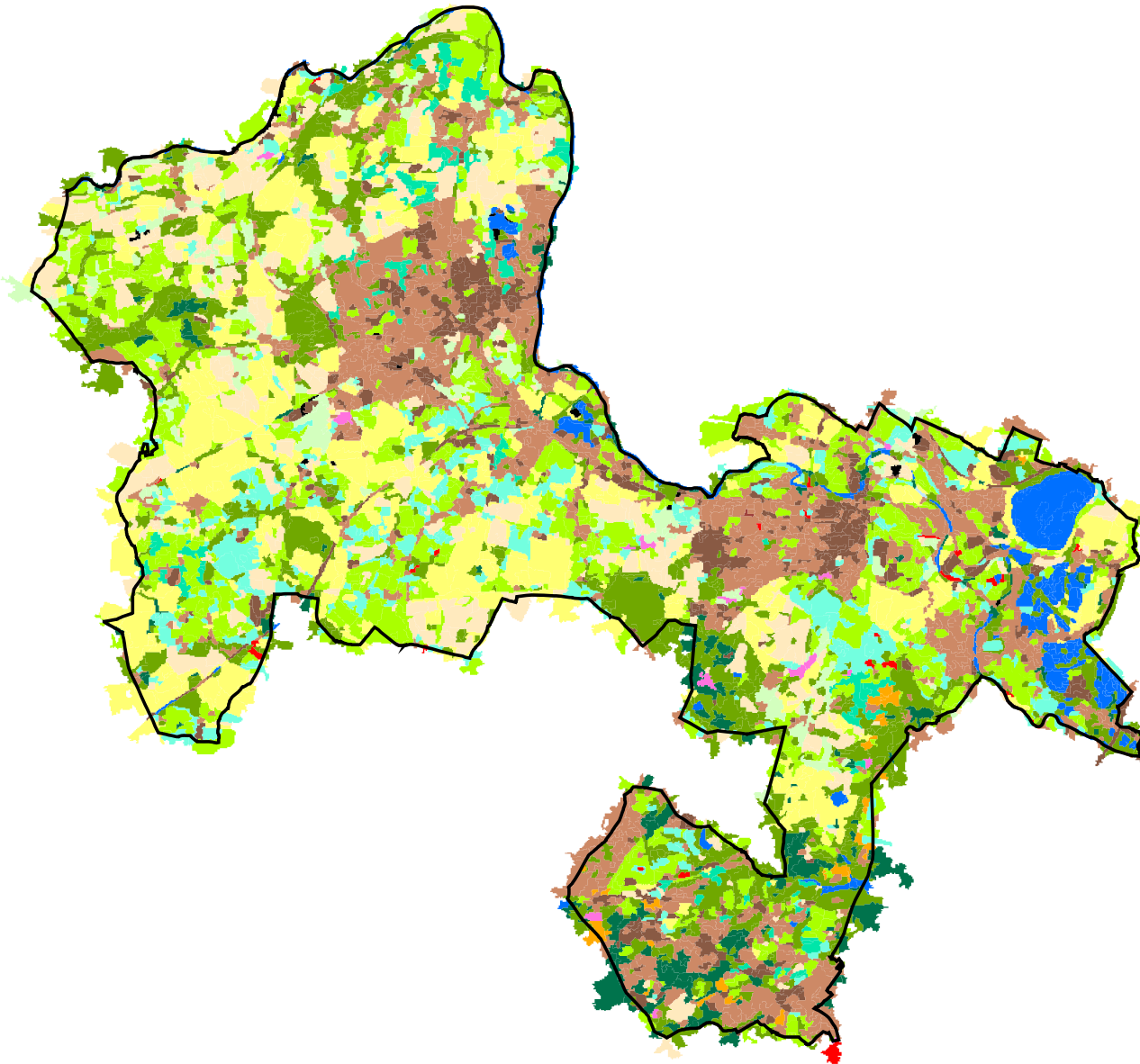
CHKD. SJD APP. IH DATE September 2004

SCALE 1:100,000 STATUS Final DWG.No. 1811LO/4.2

### Vegetation



Source: CEH Monks Wood  
Land Cover Map 2000  
Copyright Natural Environment  
Research Council



### Appendix 4.3

CHKD. SJD APP. IH DATE September 2004

SCALE 1:100,000 STATUS Final DWG.No. 1811LO/4.3

This map is reproduced from Ordnance Survey material with the permission of Ordnance Survey on behalf of the Controller of Her Majesty's Stationary Office© Crown copyright. Unauthorised reproduction infringes Crown copyright and may lead to prosecution or civil proceedings. Royal Borough of Windsor and Maidenhead, License Number LA086118, 2000.

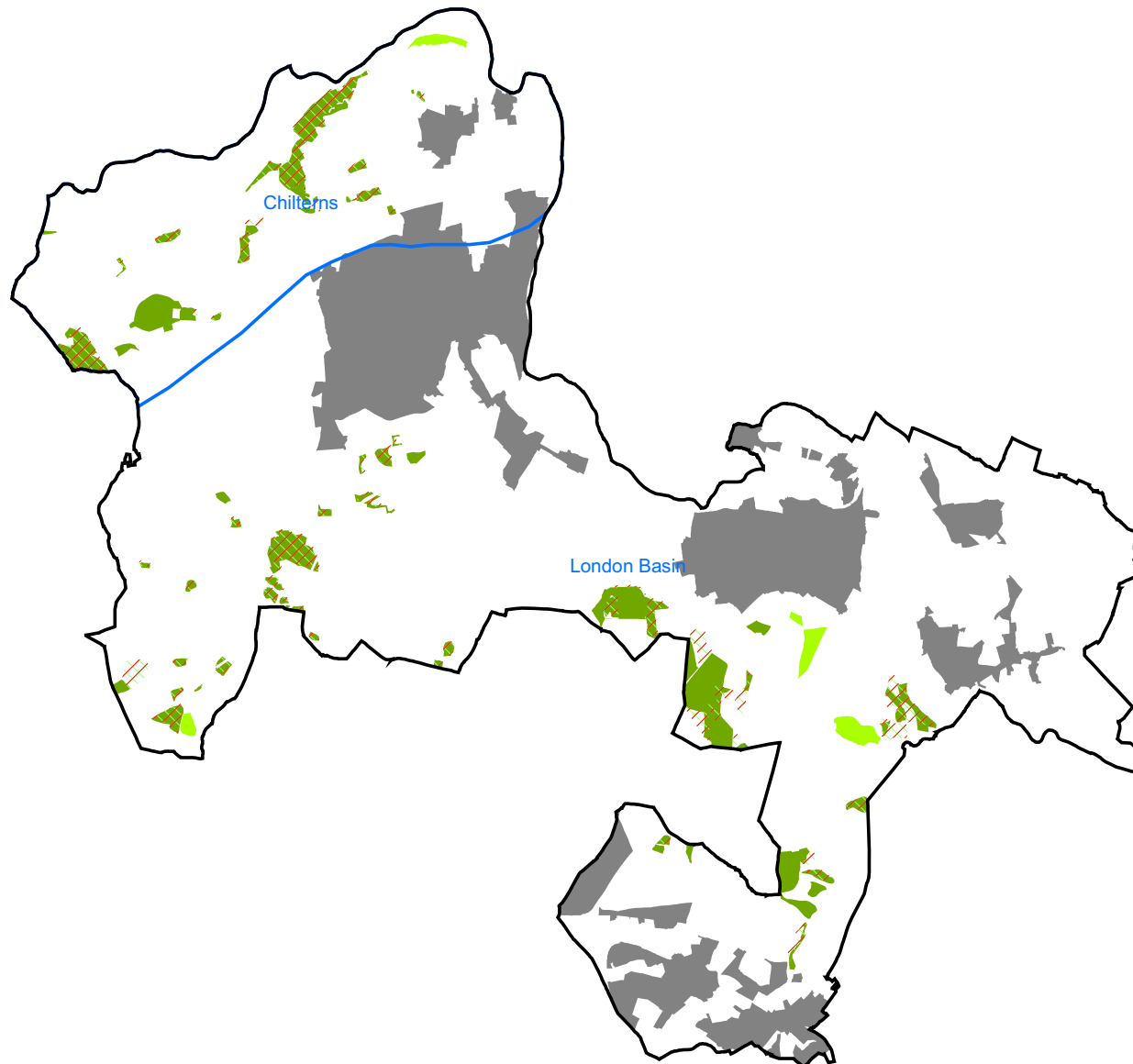
Based upon Ordnance Survey map with the permission of the controller of H.M.S.O.© Crown copyright Reproduced under licence No. 189198 © Landscape Design Associates Quality Assured to BS EN ISO 9001 : 2000


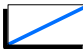







LANDSCAPE DESIGN ASSOCIATES

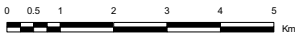
Oxford  
Tel: 01865 887050

## Natural Heritage



-  Borough Boundary
-  Natural Area Boundary
-  Grassland Inventory
-  Ancient Woodland
-  Ancient Semi Natural Woodland
-  Ancient Replanted Woodland
-  Settlements Excluded From the Green Belt

Source: Forestry Commission and English Nature



## Appendix 4.4

CHKD. SJD APP. IH DATE September 2004

SCALE 1:100,000 STATUS Final DWG.No. 1811LO/4.4

This map is reproduced from Ordnance Survey material with the permission of Ordnance Survey on behalf of the Controller of Her Majesty's Stationary Office© Crown copyright. Unauthorised reproduction infringes Crown copyright and may lead to prosecution or civil proceedings. Royal Borough of Windsor and Maidenhead, License Number LA086118, 2000.


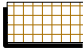
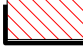





Based upon Ordnance Survey map with the permission of the controller of H.M.S.O.© Crown copyright Reproduced under licence No. 189198 © Landscape Design Associates Quality Assured to BS EN ISO 9001 : 2000



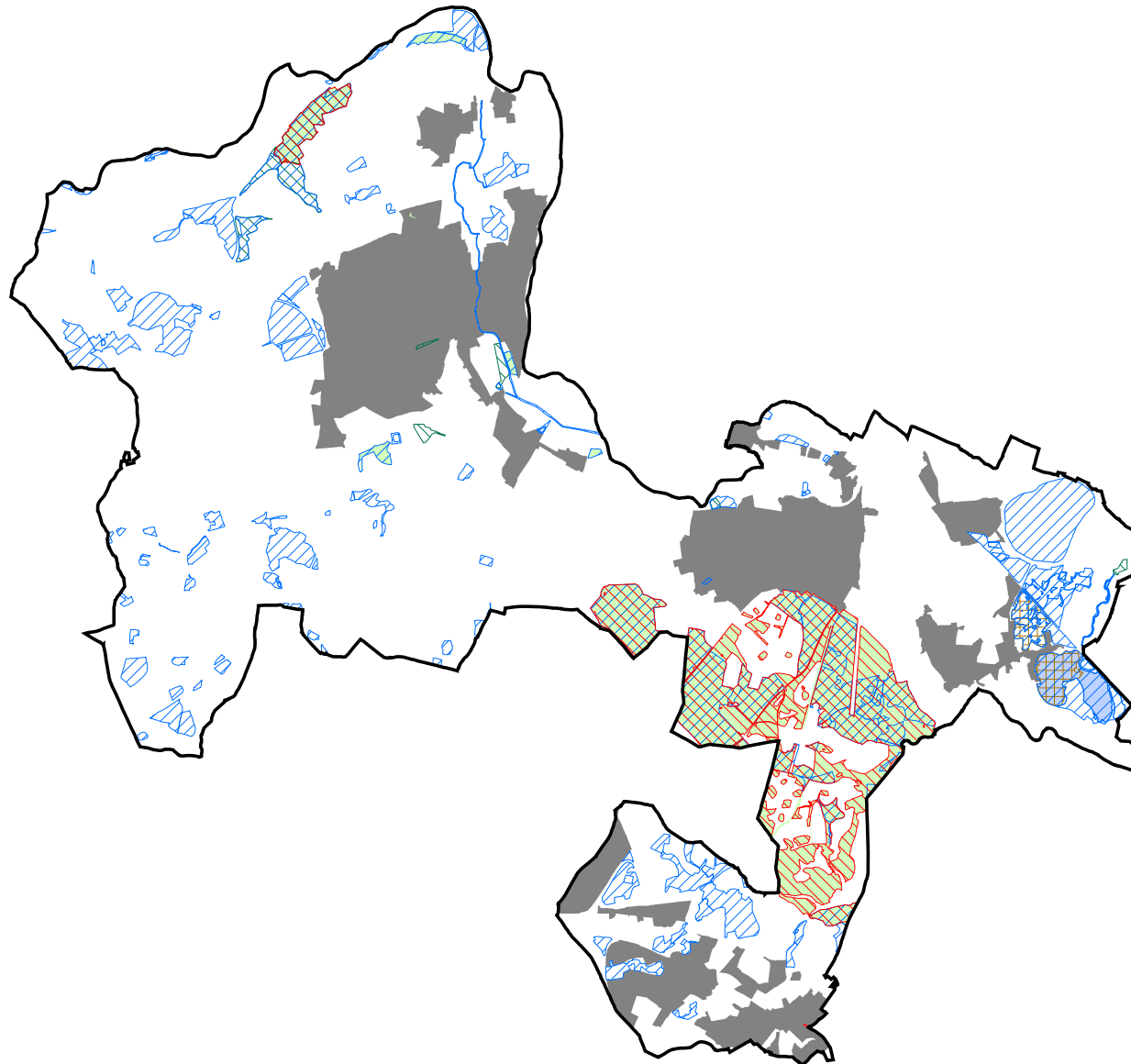
LANDSCAPE DESIGN ASSOCIATES

Oxford  
Tel: 01865 887050

### Nature Conservation Designations

-  Borough Boundary
-  RAMSAR Site
-  Special Area of Conservation
-  Special Protection Area
-  Local Nature Reserve
-  Site of Special Scientific Interest
-  Wildlife Heritage Site
-  Settlements Excluded from the Green Belt

Source: Royal Borough of Windsor and Maidenhead



#### Appendix 4.5

CHKD. SJD APP. IH DATE September 2004

SCALE 1:100,000 STATUS Final DWG.No. 1811LO/4.5

This map is reproduced from Ordnance Survey material with the permission of Ordnance Survey on behalf of the Controller of Her Majesty's Stationary Office© Crown copyright. Unauthorised reproduction infringes Crown copyright and may lead to prosecution or civil proceedings. Royal Borough of Windsor and Maidenhead, License Number LA086118, 2000.

Based upon Ordnance Survey map with the permission of the controller of H.M.S.O.© Crown copyright Reproduced under licence No. 189198 © Landscape Design Associates Quality Assured to BS EN ISO 9001 : 2000












LANDSCAPE DESIGN ASSOCIATES

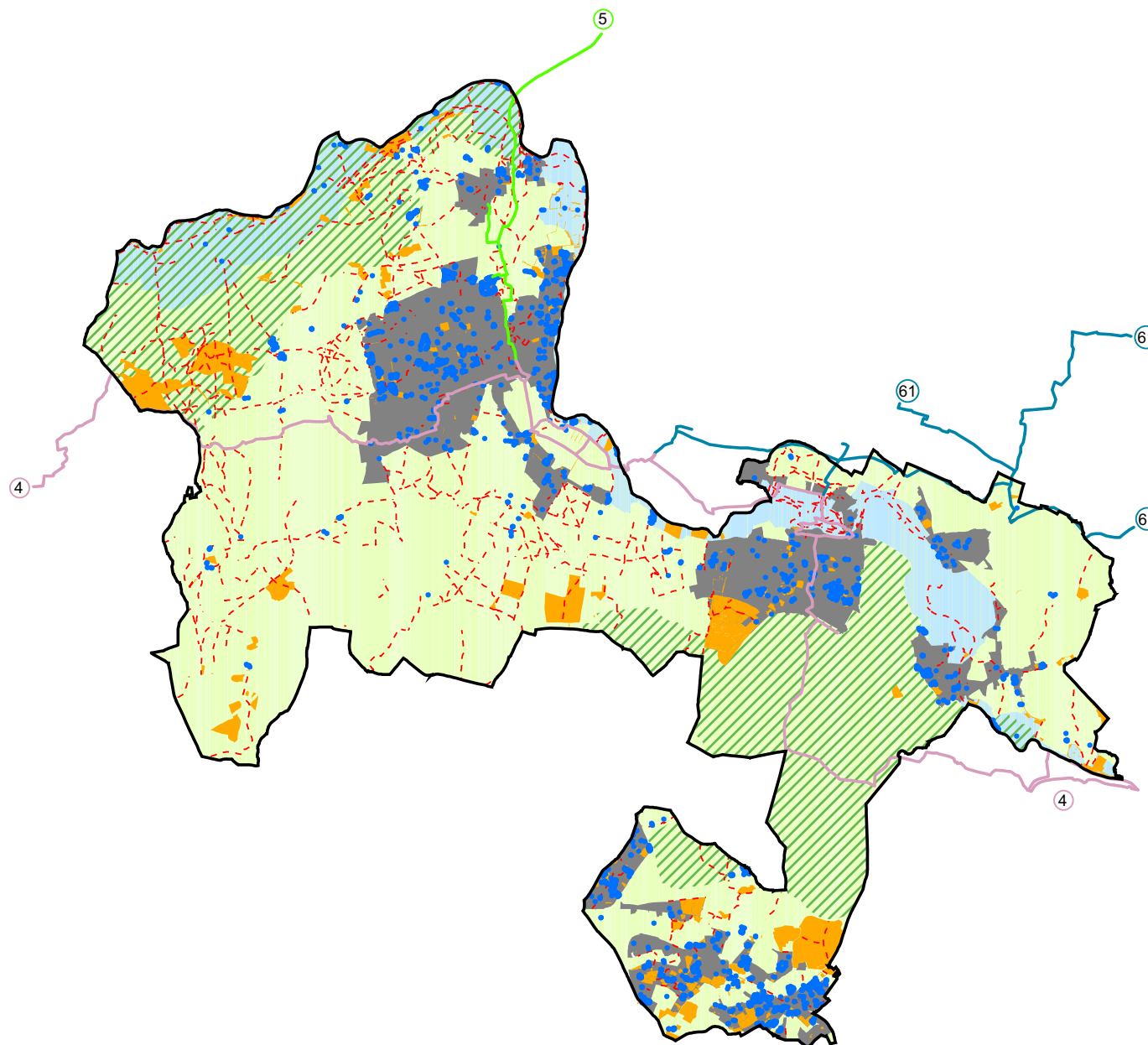
Oxford  
Tel: 01865 887050



## Landscape Designations

-  Borough Boundary
-  Green Belt
-  Areas of Special Landscape Importance
-  Setting of the Thames
-  Tree Preservation Order Area
-  Tree Preservation Order
-  Public Right of Way
-  National Cycle Network Route and Route Number
-  Settlements Excluded from the Green Belt

Sources: Royal Borough of Windsor and Maidenhead and Sustrans



Appendix 4.6

CHKD. SJD APP. IH DATE September 2004

SCALE 1:100,000 STATUS Final DWG.No. 1811LO/4.6

© CAD11811wm\AS\Appendix\1811\_Landscape.mxd

This map is reproduced from Ordnance Survey material with the permission of Ordnance Survey on behalf of the Controller of Her Majesty's Stationary Office. Crown copyright. Unauthorised reproduction infringes Crown copyright and may lead to prosecution or civil proceedings. Royal Borough of Windsor and Maidenhead, License Number LA086118, 2000.

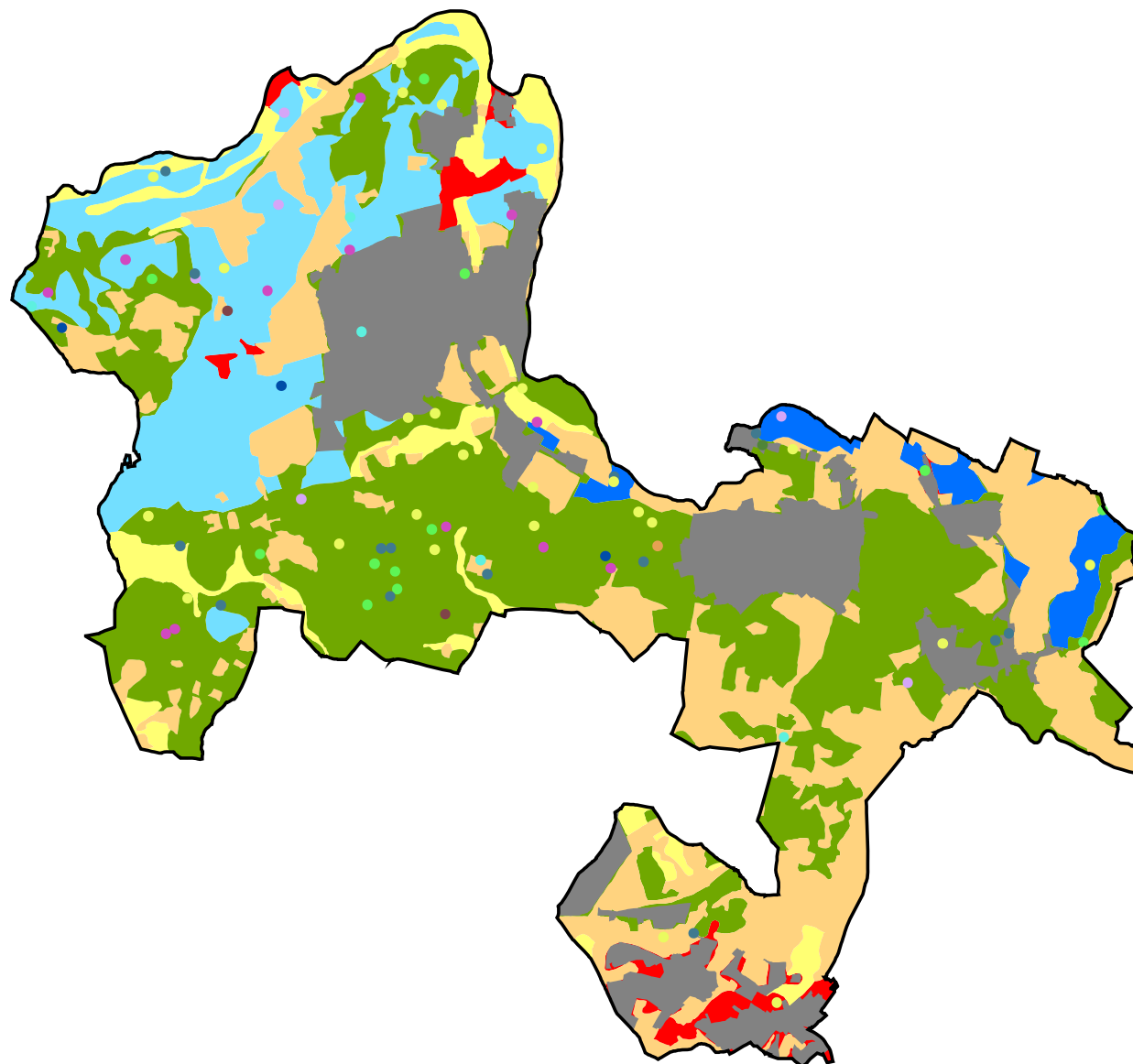
Based upon Ordnance Survey map with the permission of the controller of H.M.S.O. © Crown copyright Reproduced under licence No. 189198 © Landscape Design Associates Quality Assured to BS EN ISO 9001 : 2000





















LANDSCAPE DESIGN ASSOCIATES

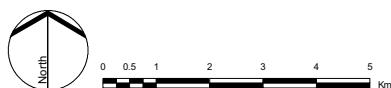
Oxford  
Tel: 01865 887050

**Provisional Agricultural Landscape  
Classification and Farm Types**



-  Borough Boundary
-  Grade 1
-  Grade 2
-  Grade 3
-  Grade 4
-  Non Agricultural
-  Urban
-  Arable Farm
-  Cattle Farm
-  Cattle Farm (other than dairy)
-  Commercial Equines
-  Dairy Farm
-  Farm Management
-  Goats
-  Grazing Only
-  Pig Farm
-  Sheep Farm
-  Settlements Excluded from the Green Belt

Source: Royal Borough of Windsor and Maidenhead and Department for Environment Food and Rural Affairs (DEFRA)



Appendix 4.7








This map is reproduced from Ordnance Survey material with the permission of Ordnance Survey on behalf of the Controller of Her Majesty's Stationary Office © Crown copyright. Unauthorised reproduction infringes Crown copyright and may lead to prosecution or civil proceedings. Royal Borough of Windsor and Maidenhead, License Number LA096118, 2000.

Based upon Ordnance Survey map with the permission of the controller of H.M.S.O. © Crown copyright Reproduced under licence No. 189198 © Landscape Design Associates Quality Assured to BS EN ISO 9001 : 2000

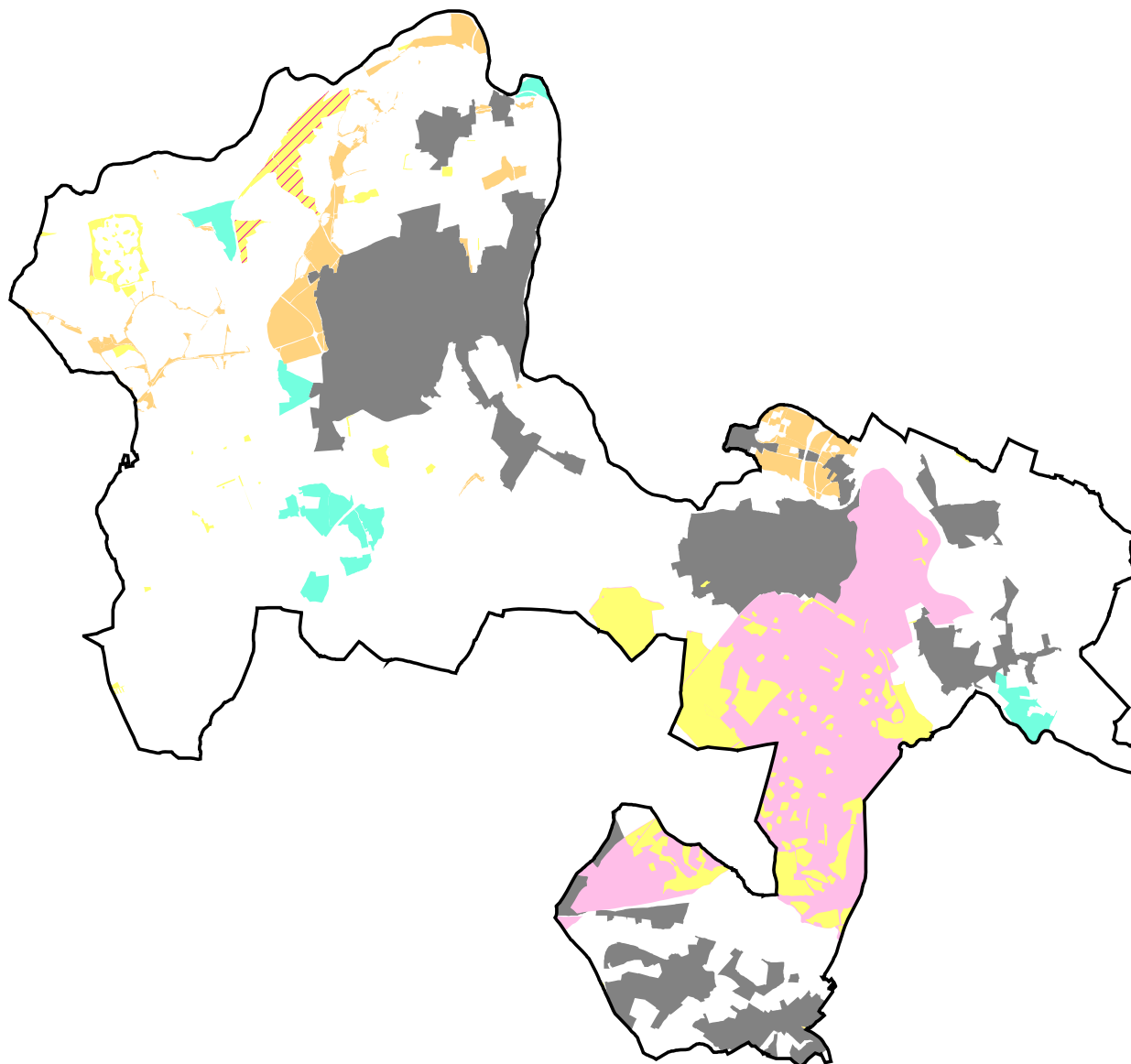


LANDSCAPE DESIGN ASSOCIATES

### Land Ownership and Management

-  Borough Boundary
-  Crown Land
-  Common Land (Including National Trust Holdings)
-  Countryside Stewardship Agreements
-  Woodland Grant Scheme
-  Woodland Trust Site
-  Settlements Excluded from the Green Belt

Sources: Forestry Commission, DEFRA, Woodland Trust, Royal Borough of Windsor and Maidenhead



### Appendix 4.8

CHKD. SJD APP. IH DATE September 2004

SCALE 1:100,000 STATUS Final DWG.No. 1811LO/4.8

This map is reproduced from Ordnance Survey material with the permission of Ordnance Survey on behalf of the Controller of Her Majesty's Stationary Office © Crown copyright. Unauthorised reproduction infringes Crown copyright and may lead to prosecution or civil proceedings. Royal Borough of Windsor and Maidenhead, License Number LA086118, 2000.

Based upon Ordnance Survey map with the permission of the controller of H.M.S.O. © Crown copyright Reproduced under licence No. 189198 © Landscape Design Associates Quality Assured to BS EN ISO 9001 : 2000








LANDSCAPE DESIGN ASSOCIATES

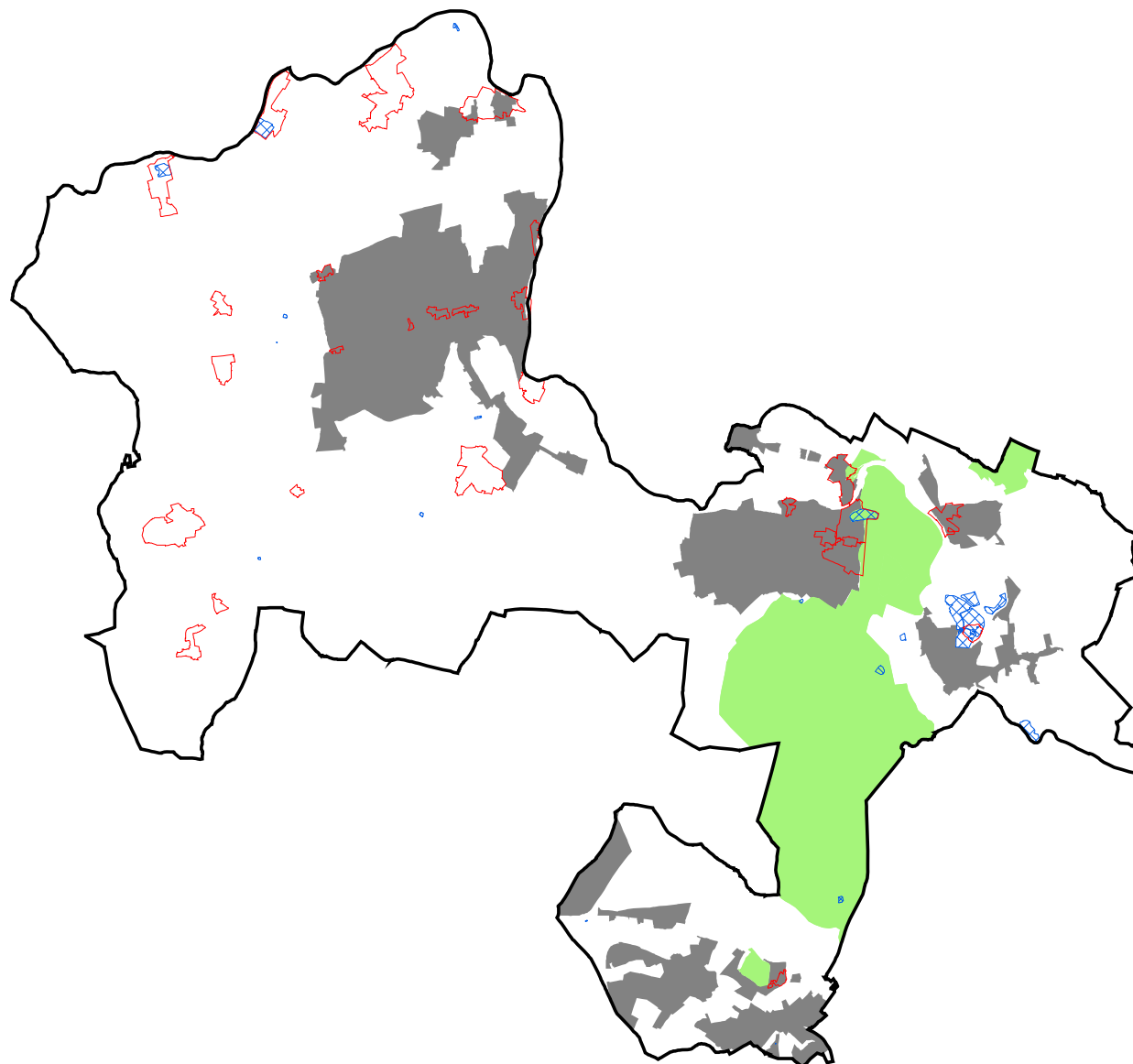
Oxford  
Tel: 01865 887050



### Cultural Heritage

-  Borough Boundary
-  Conservation Area
-  Scheduled Ancient Monument
-  Registered Historic Park or Garden
-  Settlements Excluded from the Green Belt

Source: Royal Borough of Windsor and Maidenhead and English Heritage



Appendix 4.9

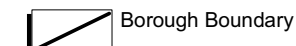
This map is reproduced from Ordnance Survey material with the permission of Ordnance Survey on behalf of the Controller of Her Majesty's Stationary Office. Crown copyright. Unauthorised reproduction infringes Crown copyright and may lead to prosecution or civil proceedings. Royal Borough of Windsor and Maidenhead, License Number LA086118, 2000.

Based upon Ordnance Survey map with the permission of the controller of H.M.S.O. © Crown copyright  
Reproduced under licence No. 189198  
© Landscape Design Associates  
Quality Assured to BS EN ISO 9001 : 2000



LANDSCAPE DESIGN ASSOCIATES

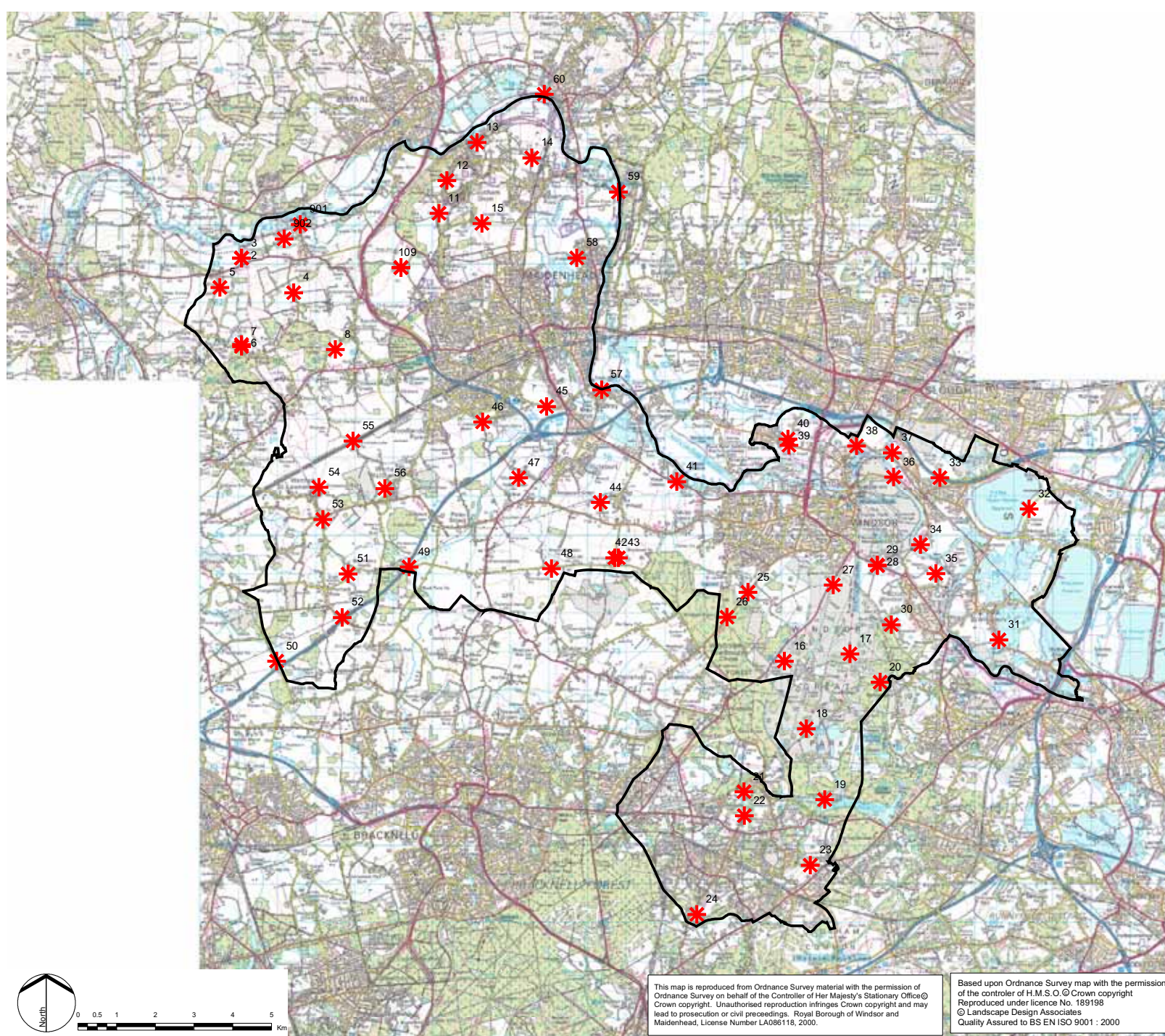
# Survey Points



Borough Boundary



Survey Point



Appendix 4.10

This map is reproduced from Ordnance Survey material with the permission of Ordnance Survey on behalf of the Controller of Her Majesty's Stationary Office© Crown copyright. Unauthorised reproduction infringes Crown copyright and may lead to prosecution or civil proceedings. Royal Borough of Windsor and Maidenhead, License Number LA096118, 2000.

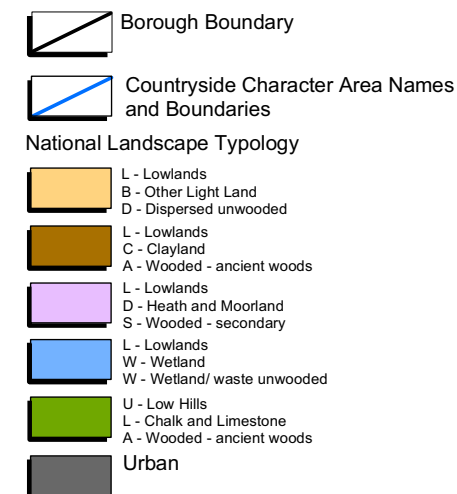
Based upon Ordnance Survey map with the permission of the controller of H.M.S.O.© Crown copyright Reproduced under licence No. 189198 © Landscape Design Associates Quality Assured to BS EN ISO 9001 : 2000



LANDSCAPE DESIGN ASSOCIATES



## Countryside Character Areas and National Landscape Typology Types



Countryside Character Areas courtesy  
of the Countryside Agency

Landscape Character Types (LCT) (1:250,000  
scale) developed for the Countryside Agency  
by Steven Warnock (in association with the  
Living Landscapes Project). Copyright:  
Countryside Agency and Cranfield University  
(soil component) 2001.

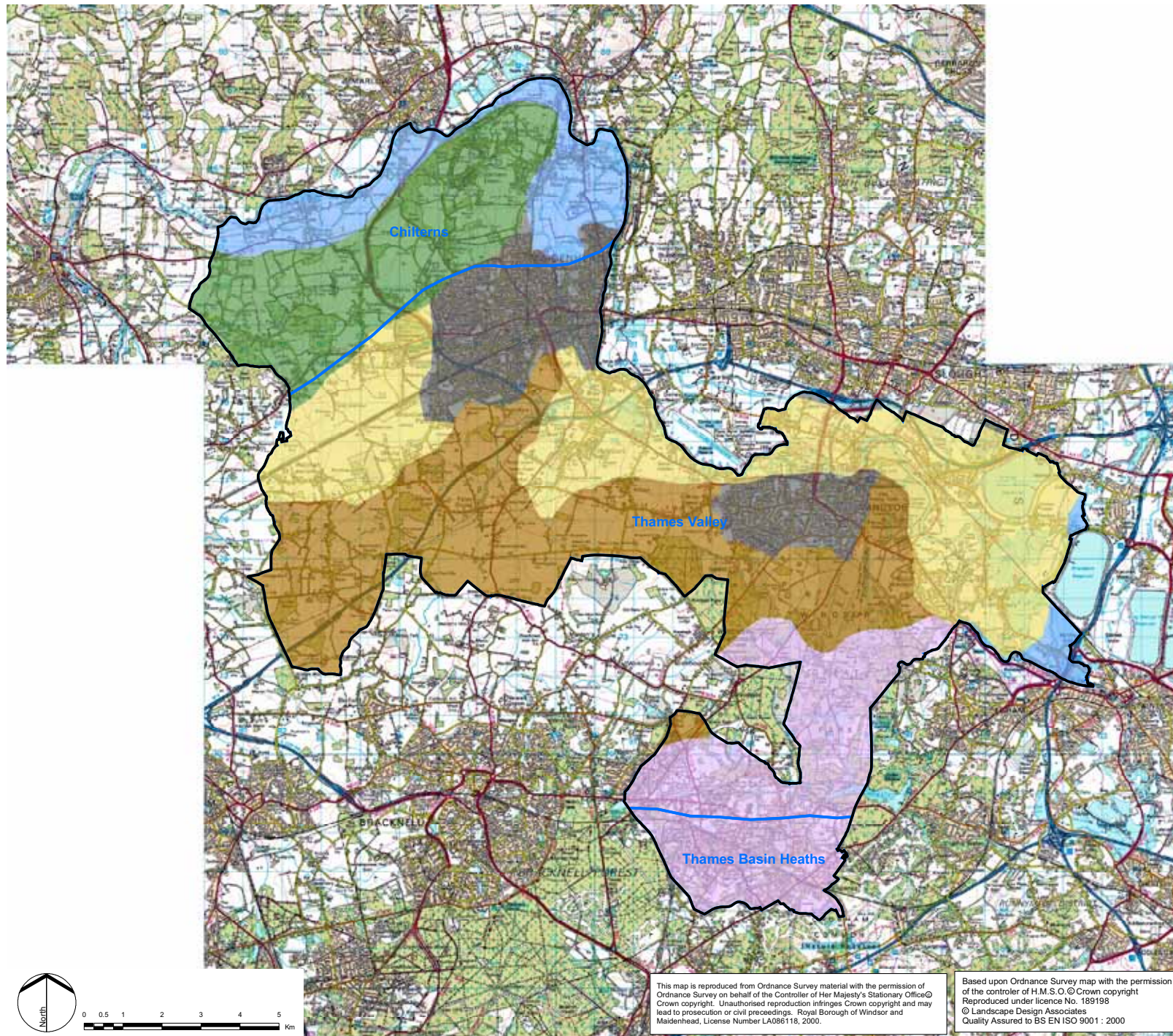


Figure 1

CHKD. SJD APP. IH DATE September 2004

SCALE 1:100,000 STATUS Final DWG.No. 1811LO/1

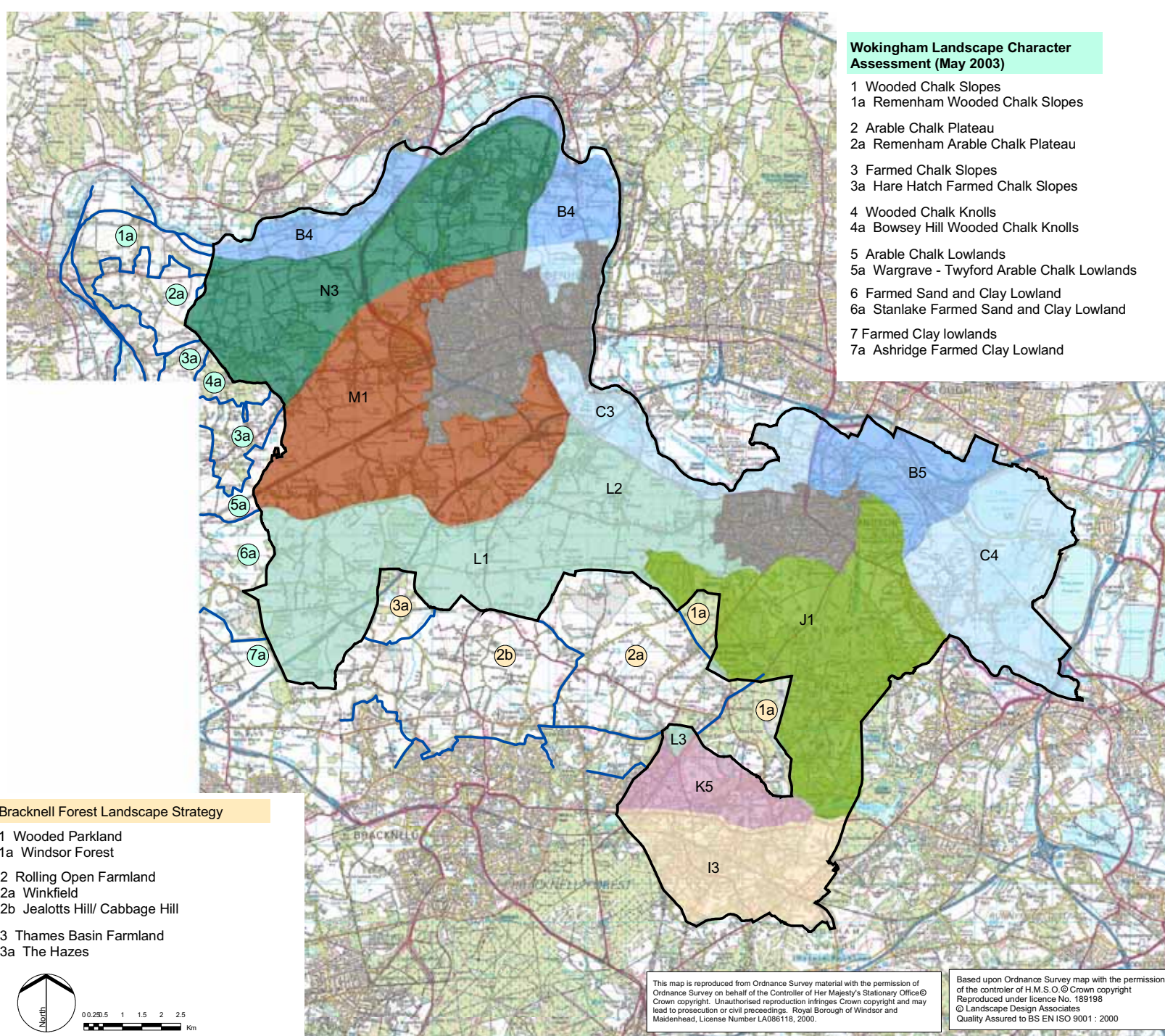
© CAD11811km\A3\figure1\1811\_CCA\_RLT.mxd



LANDSCAPE DESIGN ASSOCIATES

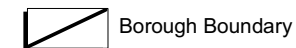
Oxford  
Tel: 01865 887050



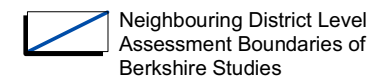
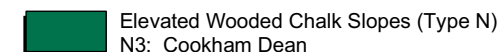
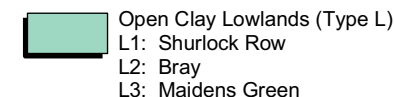
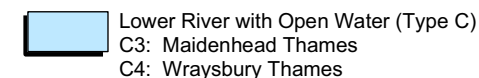
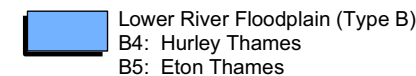


## Royal Borough of Windsor and Maidenhead Landscape Character Assessment

### County and District Landscape Character Assessments



Berkshire Landscape Character Assessment (Sept 2003) Landscape Character Types



Landscape Character data courtesy of Land Use Consultants and Babbie



LANDSCAPE DESIGN ASSOCIATES



Figure 2

CHKD. SJD APP. IH DATE September 2004

SCALE 1:100,000 STATUS Final DWG.No. 1811LO/2

© CAD1811temA3fig0001811\_LDA\_LCT.mxd

Oxford  
Tel: 01865 887050





Figure 3

CHKD. SJD      APP. IH      DATE September 2004

SCALE 1:100,000 STATUS Final DWG.No. 1811LO/3

Q:\CAD\1811\w\A3\Figures\1811\_LDA\_LCA.mxd

This map is reproduced from Ordnance Survey material with the permission of Ordnance Survey on behalf of the Controller of Her Majesty's Stationary Office© Crown copyright. Unauthorised reproduction infringes Crown copyright and may lead to prosecution or civil proceedings. Royal Borough of Windsor and Maidenhead, License Number LA086118, 2000.

Based upon Ordnance Survey map with the permission  
of the controller of H.M.S.O. © Crown copyright  
Reproduced under licence No. 189198  
© Landscape Design Associates  
Quality Assured to BS EN ISO 9001 : 2000



LANDSCAPE DESIGN ASSOCIATES