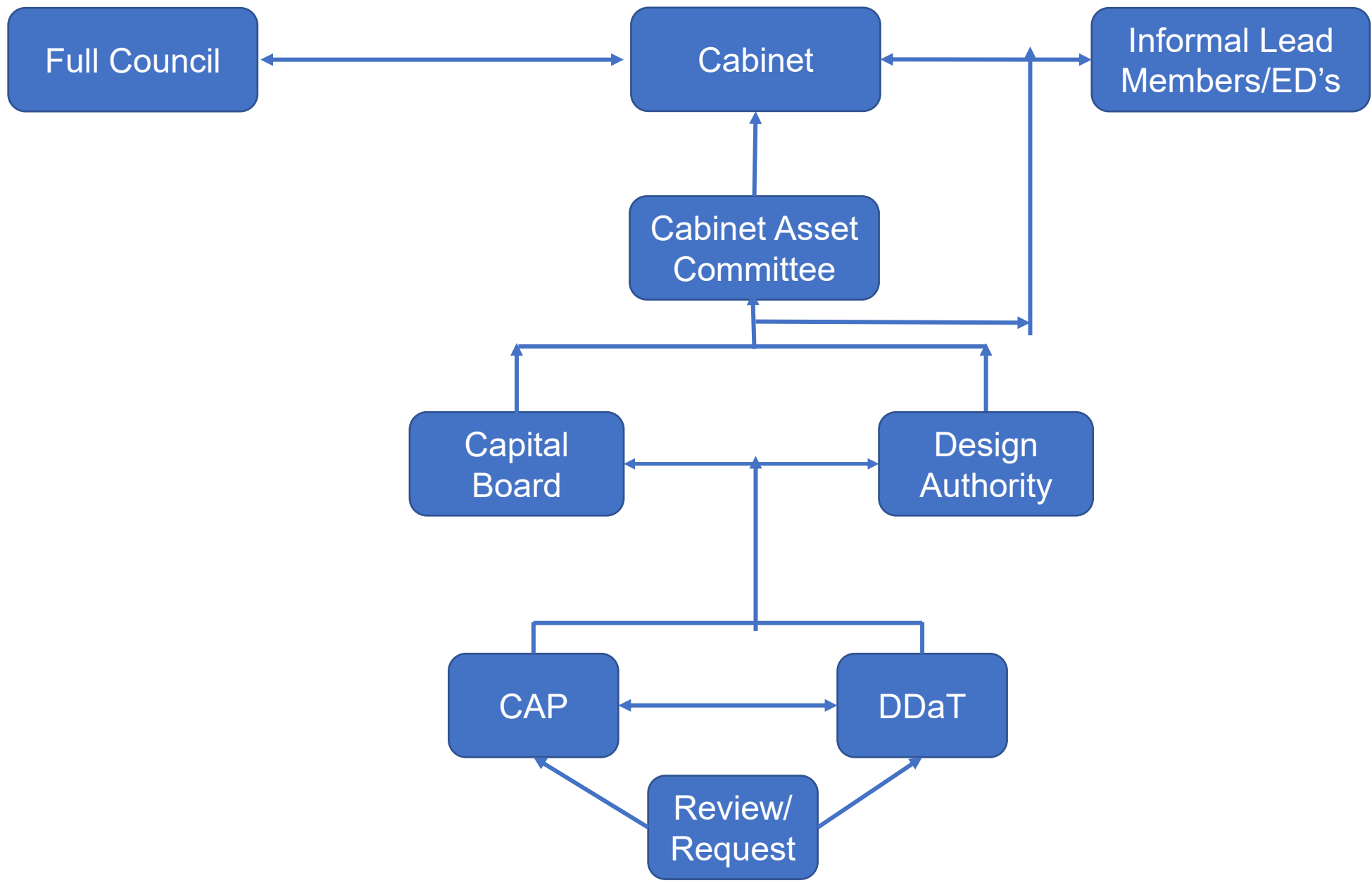


Slough Borough Council - Governance Corporate Asset Panel

Terms of Reference

October 2025

Wider SBC Governance



Corporate Asset Panel (CAP)

Item	Description	
Purpose	To optimise the benefits that can accrue from SBC property assets, at portfolio level, and therefore deliver VFM to residents. Ensure transparent, speedy and integrated decision making in a “controlled environment” Forum has authority to make decisions on behalf of respective services Escalation route is to the Asset & Strategy Board (Chaired by Cabinet Member for L&P)	
Scope	<ul style="list-style-type: none">• SBC Commercial/Investment assets• SBC Non-operational assets• SBC Operational assets	
Inputs	<ul style="list-style-type: none">• Share current portfolio information as required, and service strategies• Share current and emerging information that identifies existing/new assets that do not have a clear service remit.• Gateway for receiving service requests for new assets and/or changes to existing arrangements.• Consideration of Member requests	
Attendees	In line with our networked leadership approach, senior representative officers will be drawn from across the Directorates including:	
	<ul style="list-style-type: none">• Children’s Services (inc. Libraries)• Adult Social Care• Strategy, Change & Resident Engagement• Economic Development & Regeneration• Housing - HRA• Planning Services• Environment & Highways• Finance	
Output	Sharing portfolio data, sub-portfolio strategies, capital projects (planned and current) Content to be held on sharepoint, until a Property Management system is sourced and implemented.	
Governance	The Corporate Asset Panel is a working group between Property and SBC Services. Outputs can be shared with the Asset Cabinet Committee when required or escalated when a recommendation needs to be decided upon.	

Evaluation Criteria

From Capital Programme evaluation / prioritisation

- Links to Corporate Plan 2023 – 2027
- Targeted Operating Model
- Consistency with Councils overall asset management strategy
- Statutory obligations
- One-off savings (% of initial capital outlay)
- Ongoing savings (£/year)
- SBC funding requirement
- Risk of delivery (achievability timescale, resource)
- Impact on business critical services

Other?

- Planning risk
- Service site options in locality
- Compatibility of uses
- Environmental benefits

Priority Outcomes

Our Approach

To deliver change and improve, we know we need a new approach as an organisation. This section sets out the type of council we wish to be, our values, how we will work and our relationship with residents. These are the principles that will enable us to be a sustainable organisation, providing good value in service to our residents.



Resident Focused



Providing financial sustainability



Enabling residents and communities



Strengthening partnerships



Building trust

Resident Focused



We will serve the people of Slough first and foremost: responding to their concerns, ensuring their views are heard and delivering on the issues that matter most to them.

How we will do this:

- Ensuring residents are consulted on key decisions.
- Improving response times and customer service.
- Making it easier for residents to access advice and information.

Providing financial sustainability



We will build on our work to provide financial sustainability for the council and embed good practice for local government: living within our means, balancing our budget and being honest and open about the difficult decisions that we will need to make over the coming years.

How we will do this:

- Ensure that the corporate plan aligns with the council's Medium Term Financial Strategy which sets out how our priorities will be resourced. Any financial implications arising from implementation of actions are fully factored into the budget and the MTFP planning process.
- Continue to improve our financial resilience, focusing on financial recovery and onward sustainability.

Enabling residents and communities



We will focus on enabling residents to live well independently: building community capacity and resilience, fostering self-sufficiency and creating platforms that allow our community to shape Slough's future.

How we will do this:

- Being active and present in our community
- Working with residents to cultivate strong, healthy and attractive neighbourhoods where residents live well, independently, and become self-sufficient.
- Providing opportunities for residents to change the things they believe need changing in their community.